



Parts Manual



Champion

Series Zero-Turn Riders & Mower Decks

20HP Product

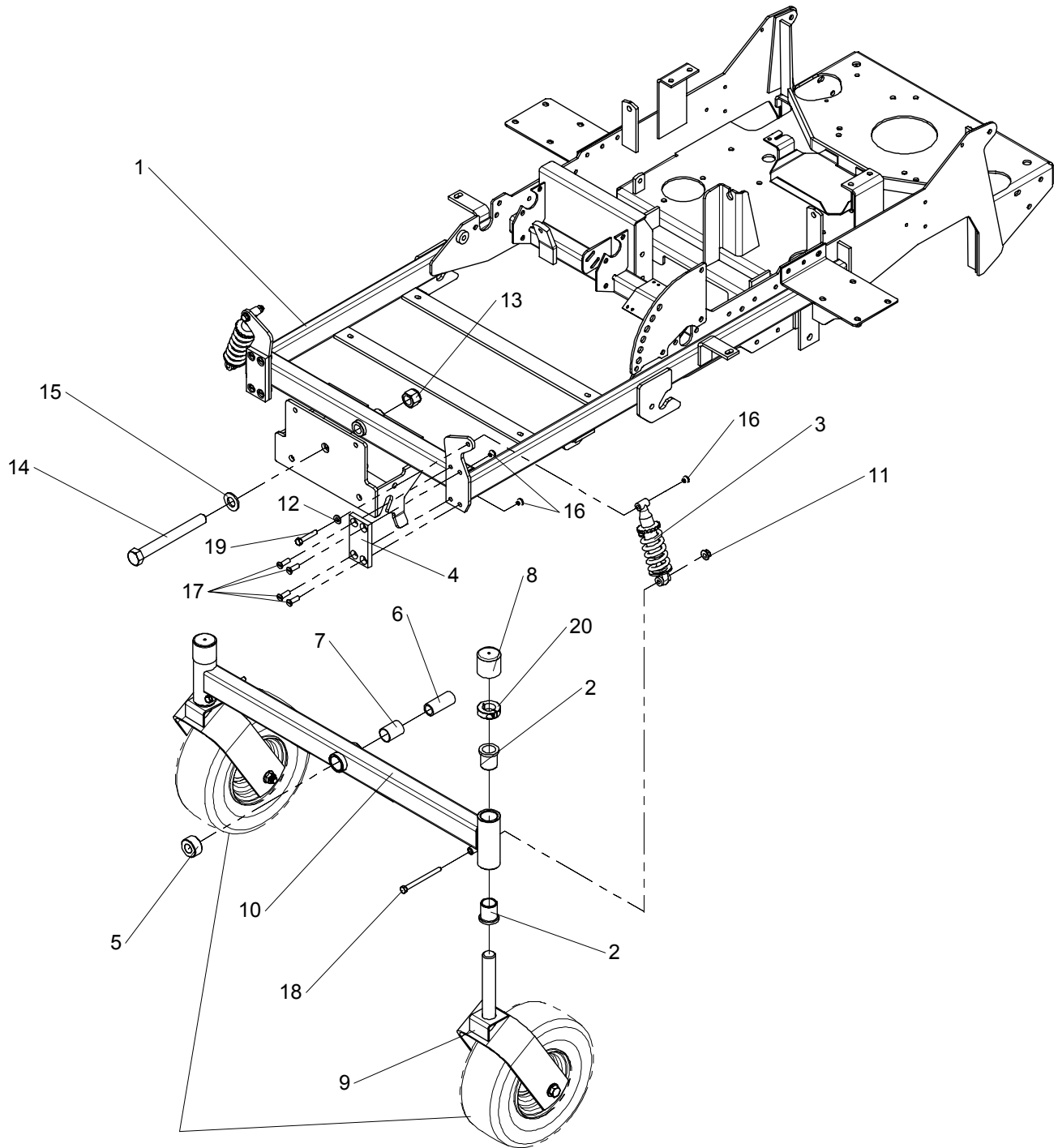
Mfg. No.	Description
2690449	Champion, 20HP Kohler Rider w/44" Mower
2690451	Champion, 20HP B&S Rider w/50" Mower
2690452	Champion, 20HP B&S Rider w/50" Mower (CE)
2690483	Champion, 20HP Kohler Rider w/44" Mower (CE)
2690484	Champion, 20HP B&S Rider w/50" Mower (CE)

PRODUCT COMPONENTS	PAGES
Main Frame & Front Suspension Group	4
Bumper Group	6
Engine & PTO Group	8
Drive Group	10
Hydraulic Group	12
Hydraulic Pump SERVICE PARTS - BDP/PG Series	14
Control Group Panel	16
Control Group Upper	18
Control Group Lower	20
Electrical Group	22
Seat & Kickplate Group	24
Fuel Tank Group	26
Brake Group	28
Rear Suspension Group	30
Lift Group	32
Wheel & Tire Group	36
Decals Group - Brand & Model	38
Decals Group - Safety & Common	40
Export Decals Group - Safety & Common	42
44" & 50" Mower Deck - Belt & Idler Group	44
44" & 50" Mower Deck - Housing, Arbors & Blades Group	46
44" Mower Deck Roller Group	48
50" Mower Deck Roller Group	50
Torque Specification Chart	Inside Back Cover

Main Frame & Front Suspension Group

276FRM0

NOTE: Unless noted otherwise,
use the standard hardware torque
specification chart.



See Tire & Wheel Group

The above parts group applies to the following Mfg. Nos.:

- 2690449 - Champion
- 2690451 - Champion
- 2690452 - Champion
- 2690483 - Champion
- 2690484 - Champion

Main Frame & Front Suspension Group

REF NO	PART NO.	QTY.	DESCRIPTION
1	5401035C	1	WELD, MAINFRAME, SIMPLICITY ZT
2	5021541	4	BUSHING, FLANGE
3	5023483	2	SHOCK, 8.0 CENTER TO CENTER
4	5045990	2	PLATE, FRICTION REDUCER
5	5400756	1	SPACER, .75 X 1.50 X .785
6	5047489	1	SPACER, .75 X 1.00 X 2.38
7	5022852	1	PIVOT BEARING,1.00" X 1.125" OD X 1.50"
8	5023214	2	CAP, VINYL 1.687 X 1-1/2
9	5048775C	2	WELD, CASTER YOKE
10	5400962C	1	WELD, PIVOTING FRONT END
11	5025394	4	NUT, 3/8-16 HEX NYLOCK FLANGE
12	5025155	2	WASHER, 5/16" SAE
13	5025284	1	NUT, 3/4-16 HEX NYLON LOCK
14	5025265X56	1	3/4-16 X 6" GD 8 BOLT TZ
15	5025160	1	WASHER, 3/4" SAE
16	5025057	10	NUT 5/16-18 HEX NYLON LOCK
17	5025303	8	SCREW 5/16-18 X 1 FLAT HD SC
18	5025011X30	2	BOLT, 5/16-18 X 3" GD5
19	5025011X14	2	BOLT, 5/16-18 X 1-3/4" GD5
20	5020602	2	COLLAR, 1" SPLIT

Footnotes

The above parts group applies to the following Mfg. Nos.:

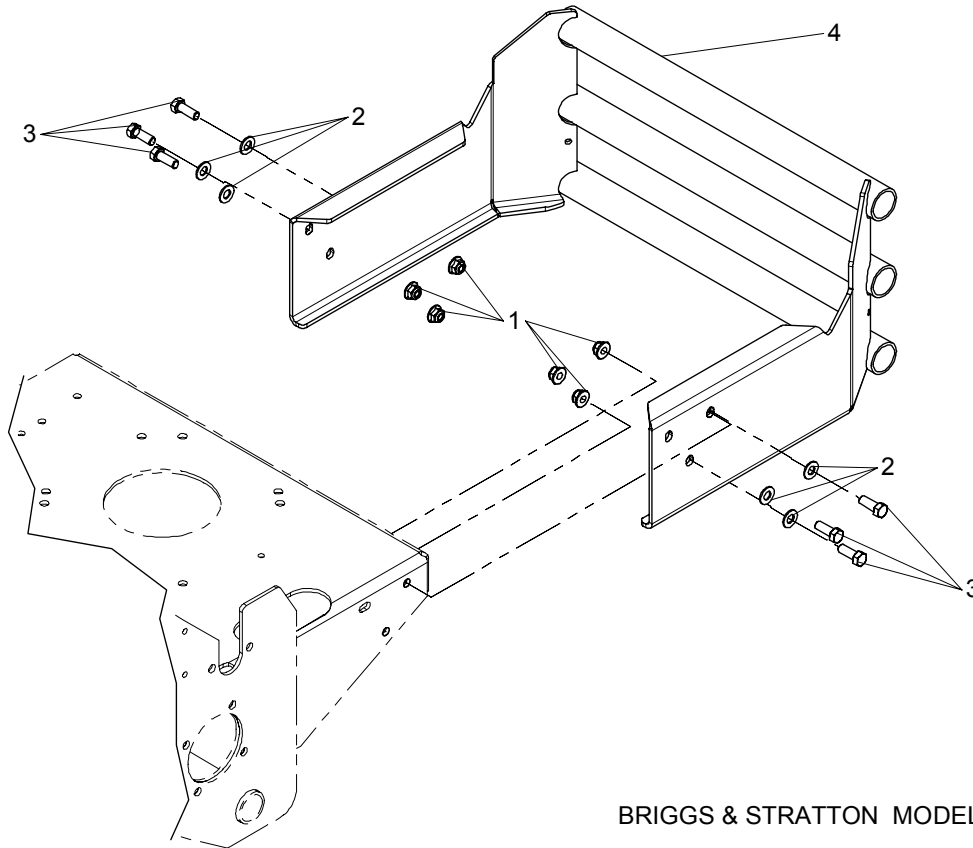
2690449 - Champion
2690451 - Champion
2690452 - Champion
2690483 - Champion
2690484 - Champion

Bumper Group

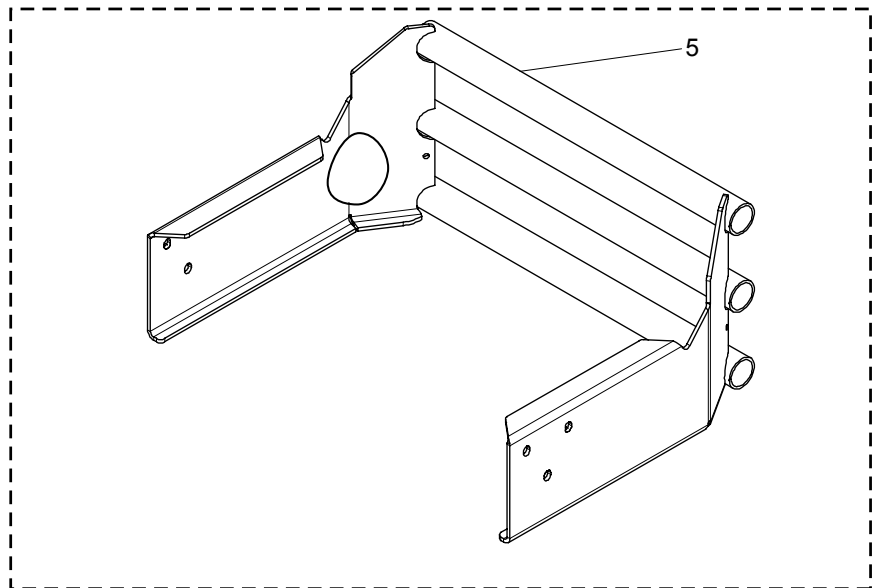
NOTE: Unless noted otherwise,
use the standard hardware torque
specification chart.

276BMP0

KOHLER MODEL



BRIGGS & STRATTON MODELS



The above parts group applies to the following Mfg. Nos.:

- 2690449 - Champion
- 2690451 - Champion
- 2690452 - Champion
- 2690483 - Champion
- 2690484 - Champion

Bumper Group

REF NO	PART NO.	QTY.	DESCRIPTION
1	5025394	6	NUT, 3/8-16 HEX NYLOCK FLANGE
2	5025156	6	WASHER 3/8" SAE
3	5025013X8	6	BOLT, 3/8-16 X 1" GD5
4	5400356C	1	WELD, BUMPER, CONSUMER Z (For Models with Kohler Engines)
5	5401074C	1	WELD, BUMPER, V-TWINS CONSUMER Z (For Models with Briggs & Kawasaki Engines)

Footnotes

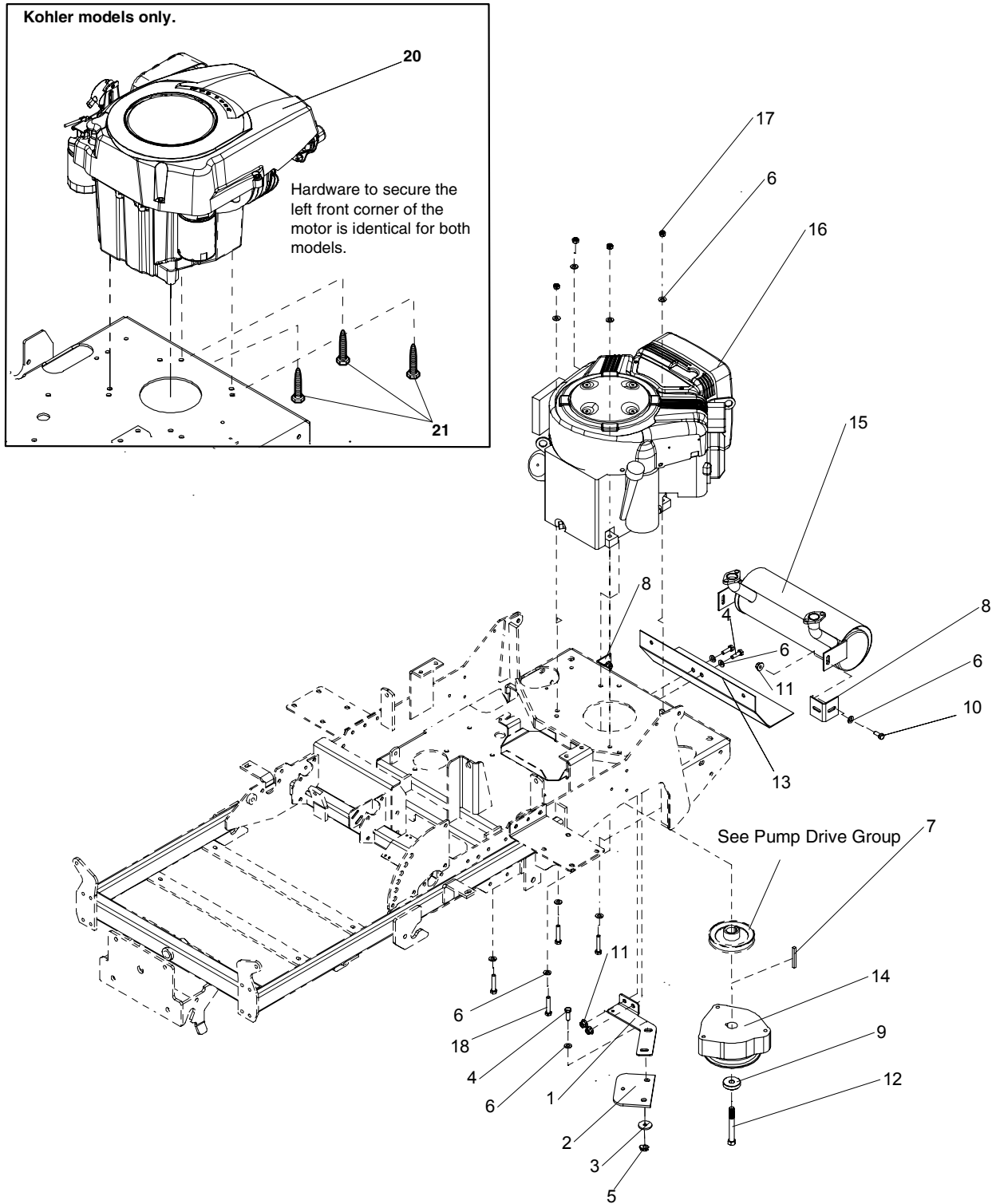
The above parts group applies to the following Mfg. Nos.:

2690449 - Champion
2690451 - Champion
2690452 - Champion
2690483 - Champion
2690484 - Champion

Engine & PTO Group

NOTE: Unless noted otherwise,
use the standard hardware torque
specification chart.

276ENG0



The above parts group applies to the following Mfg. Nos.:

- 2690449 - Champion
- 2690451 - Champion
- 2690452 - Champion
- 2690483 - Champion
- 2690484 - Champion

Engine & PTO Group

REF NO	PART NO.	QTY.	DESCRIPTION
1	5061857C	1	PLATE, CLUTCH ANCHOR
2	5043636	1	CLUTCH ANCHOR PAD
3	5044617	3	WASHER, CLUTCH ANCHOR
4	5025011X8	5	BOLT, 5/16-18 X 1" GD5
5	5025392	3	NUT, 5/16-18 HEX NYLOCK FLANGE
6	5025155	17	WASHER, 5/16" SAE
7	5050407X18	1	KEY, 1/4" SQ. X 3-1/2"
8	5048262C	2	BRACKET, MUFFLER
9	5042132	1	SPACER, .45 X 1.62 X .37
10	5025011X6	4	BOLT, 5/16-18 X 3/4" GRD5
11	5025139	6	NUT, 5/16-18 HEX LG SERR FLG.
12	5023253	1	BOLT, CRANKSHAFT, 7/16" X 2"
13	5401071C	1	PLATE, HEAT SHIELD
14	5023100	1	CLUTCH, ELECTRIC, 1" SHAFT
15	5023187	1	MUFFLER, 20HP BRIGGS
16	*	1	ENGINE, 20HP BRIGGS
17	5025057	4	NUT 5/16-18 HEX NYLON LOCK
18	5025011X14	4	BOLT, 5/16-18 X 1-3/4" GD5
19	5048681	1	HOSE, OIL DRAIN
20	*	1	ENGINE, 20HP KOHLER
21	5100399	3	BOLT, 3/8-16 X 1", SELF TAPPING
22	5021500	1	CLAMP, VINYL INSULATED

Footnotes

Note* Not an illustrated part.

Note* Not an illustrated part.

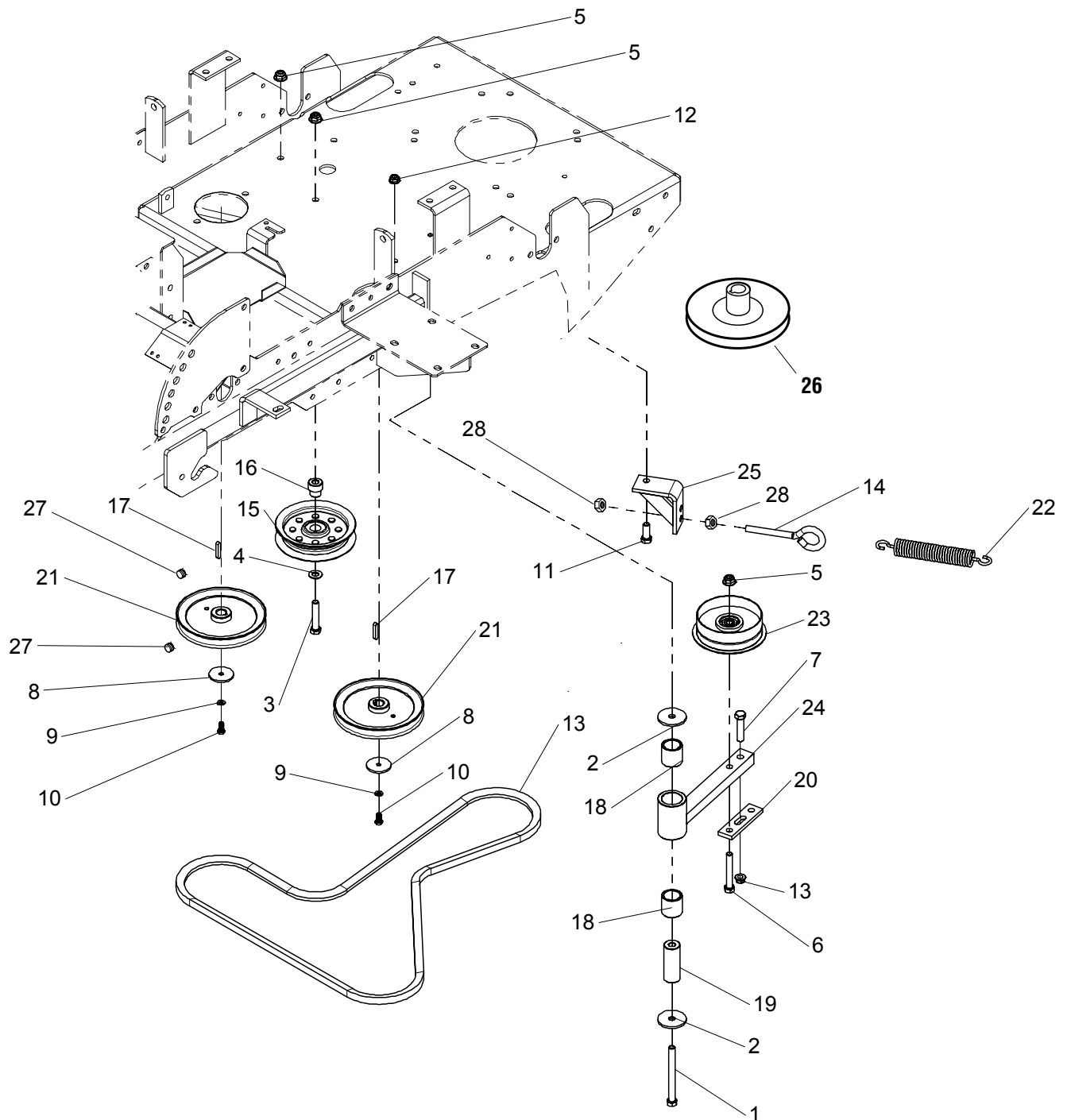
The above parts group applies to the following Mfg. Nos.:

2690449 - Champion
2690451 - Champion
2690452 - Champion
2690483 - Champion
2690484 - Champion

Drive Group

NOTE: Unless noted otherwise,
use the standard hardware torque
specification chart.

276GDR0



The above parts group applies to the following Mfg. Nos.:

- 2690449 - Champion
- 2690451 - Champion
- 2690452 - Champion
- 2690483 - Champion
- 2690484 - Champion

Drive Group

REF NO	PART NO.	QTY.	DESCRIPTION
1	5025013X32	1	BOLT, 3/8-16 X 4" GD5
2	5025305	2	WASHER, .41 X 1.75 X .14
3	5025013X16	1	BOLT, 3/8-16 X 2" GD5
4	5025156	1	WASHER 3/8" SAE
5	5025394	3	NUT, 3/8-16 HEX NYLOCK FLANGE
6	5025013X20	1	BOLT, 3/8-16 X 2-1/2" GD5
7	5025013X14	1	BOLT, 3/8-16 X 1-3/4" GD5
8	5044577	2	WASHER, .265 X 1.50 X .109, YZ
9	5025169	2	WASHER, 1/4" LOCK
10	5023215	2	BOLT, M6-1.0 X 14MM
11	5025013X8	1	BOLT, 3/8-16 X 1" GD5
12	5025392	1	NUT, 5/16-18 HEX NYLOCK FLANGE
13	5022931	1	BELT, DECK DRIVE
14	5023497	1	EYE BOLT, 3/8-16 X 5", 1" EYE
15	5021002	1	PULLEY, IDLER
16	5049184	1	SPACER, HYDRO IDLER PULLEY
17	5023254	2	KEY, 5MM SQ W/ RADIUS
18	5022157	2	BUSHING, BRASS, 1.25 X 1 X 1.25
19	5045135	1	SPACER, .39 X 1.00 X 2.55
20	5048219C	1	PLATE, ANCHOR, SPRING
21	5023251	2	PULLEY, PUMP DRIVE
22	5022847	1	SPRING, EXTENSION, SWIVEL END
23	5022621	1	PULLEY, IDLER, SINGLE FLANGE
24	5046429C	1	WELD, ARM, PUMP DRIVE IDLER
25	5045198C	1	WELD, ANCHOR EYEBOLT
26	5023252	1	PULLEY, Crankshaft
27	5025061X2	4	SET SCREW, 5/16-18 X 1/2
28	5025034	2	NUT, 3/8-16 HEX

Footnotes

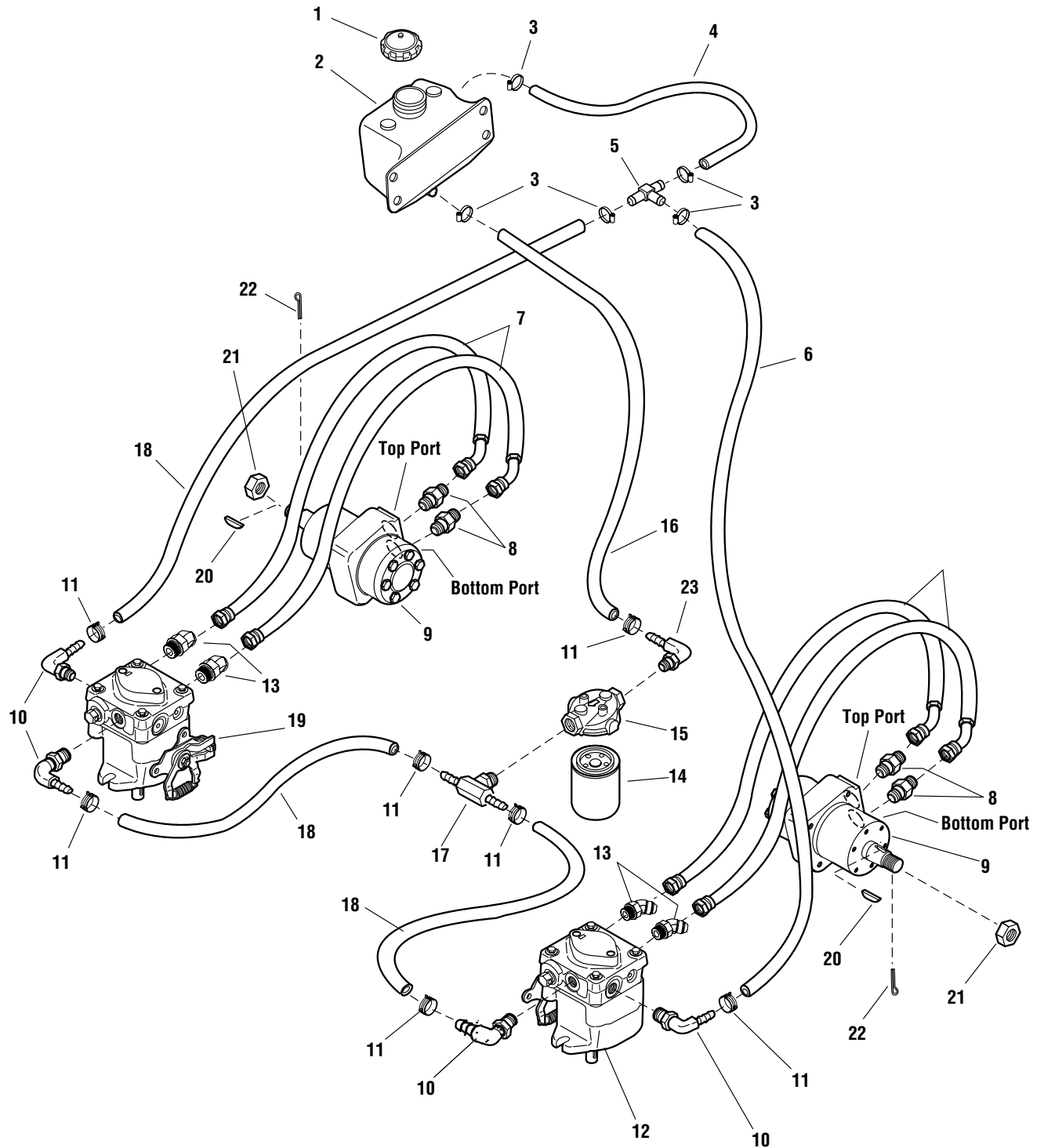
The above parts group applies to the following Mfg. Nos.:

2690449 - Champion
2690451 - Champion
2690452 - Champion
2690483 - Champion
2690484 - Champion

Hydraulic Group

NOTE: Unless noted otherwise, use the standard hardware torque specification chart.

276HYD0



The above parts group applies to the following Mfg. Nos.:

- 2690449 - Champion
- 2690451 - Champion
- 2690452 - Champion
- 2690483 - Champion
- 2690484 - Champion

Hydraulic Group

REF NO	PART NO.	QTY.	DESCRIPTION
1	5023191	1	CAP
2	5023345	1	HYDRAULIC TANK
3	5021392	5	CLAMP, #6 HOSE
4	5400711	1	HOSE, 3/8 X 8.50" LONG
5	5022920	1	TEE FITTING
6	5400708	1	HOSE, 3/8 X 27" LONG
7	5100165	4	19" HOSE ASSEMBLY
8	5022634	4	FITTING, ADAPTER
9	5023091	2	WHEEL MOTOR
10	5023267	4	FITTING, 90 DEG. O-RING
11	5023268	7	CLAMP, HOSE
12	5023092	1	HYDRAULIC PUMP, LH
13	5023338	4	FITTING, ADAPTER
14	1719168	1	FILTER
15	5023096	1	FILTER HEAD
16	5400707	1	HOSE, 5/8 X 12.5" LONG
17	5023266	1	FITTING, TEE
18	5400710	3	HOSE, 3/8 X 7.5 " LONG
19	5023093	1	HYDRAULIC PUMP, RH
20	5023091X1	2	KEY
21	5023091X2	2	NUT, CASTLE
22	5025203X10	2	PIN, COTTER, 1/8 X 1-1/4
23	5023267	1	ADAPTER, 90 DEG, 9/16-5/8 BARB

Footnotes

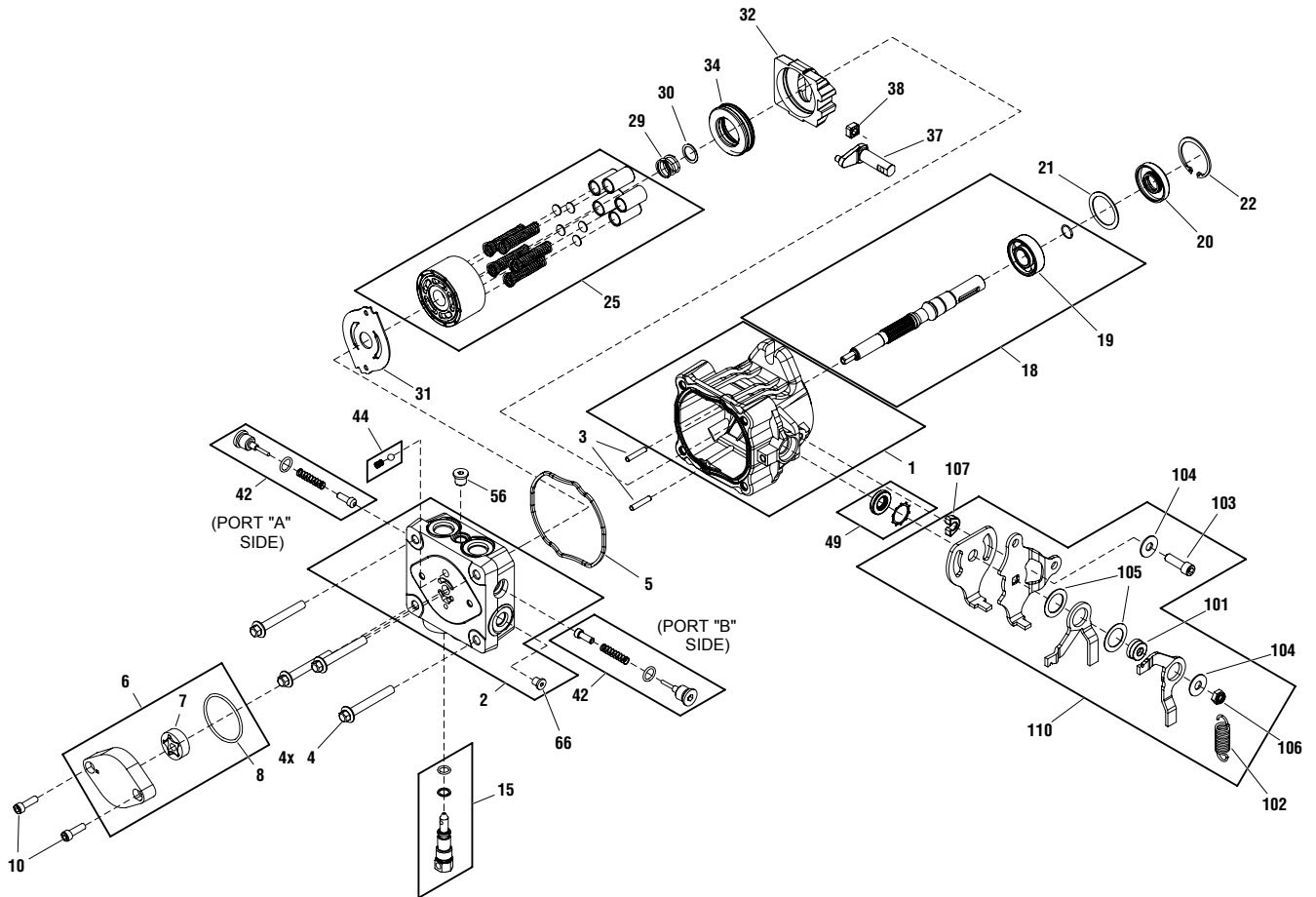
The above parts group applies to the following Mfg. Nos.:

2690449 - Champion
2690451 - Champion
2690452 - Champion
2690483 - Champion
2690484 - Champion

Hydraulic Pump SERVICE PARTS - BDP/PG Series

276PMP0

NOTE: Unless noted otherwise,
use the standard hardware torque
specification chart.



The above parts group applies to the following Mfg. Nos.:

- 2690449 - Champion
- 2690451 - Champion
- 2690452 - Champion
- 2690483 - Champion
- 2690484 - Champion

Hydraulic Pump SERVICE PARTS - BDP/PG Series

REF NO	PART NO.	QTY.	DESCRIPTION
1	5023405	1	Housing Kit
2	5023406	1	End Cap Kit (W/ Poppets, Standard Charge) (Includes Ref. Nos. 66)
3	5023407	1	Straight Headless Pin
4	5023408	4	Hex Flange Bolt M8-1.25 X 60mm LG
5	5023409	1	Housing O-Ring
6	5023410	1	Charge Pump Kit (STD) (Includes Ref. Nos. 7 & 8)
7	*	1	STD Gerotor Assy (11 cu. In/rev D-Drive) (Not a Serviceable Part)
8	*	1	O-Ring (Not a Serviceable Part)
10	5023411	2	Socket Head Screw M6 x 1.0-20mm Lg (STD Charge)
15	5023412	1	Bypass Valve Kit (Blank)
18	5023413	1	Pump Shaft Kit (Blind 15mm Keyway W/ Std Charge) (Includes Ref. Nos. 19)
19	*	1	Ball Bearing 17 x 40 x 12 (Not a Serviceable Part)
20	5023414	1	Lip Seal 17 x 40 x 7 PTC
21	5023415	1	Spacer
22	5023416	1	Retaining Ring
25	5023417	1	Cylinder Block Kit
29	5023418	1	Block Spring
30	5023419	1	Block Thrust Washer
31	5023420	1	Valve Plate (Steel N-Tec:Black)
32	5023421	1	Swashplate
34	5023422	1	Ball Thrust Bearing
37	5023423	1	Trunnion Arm, Tapered Square
38	5023424	1	Slot Guide
42	5023425	2	Check Valve Kit (0.031"Orifice)
44	5023426	1	Charge Relief Valve Kit (1/4" Plastic Ball & Spring)
49	5023427	1	Trunnion Seal / Retainer Kit
56	5023428	1	Straight Thread Plug
66	*	1	5/16" SAE Plug (Not a Serviceable Part)
100	5023429	1	Overhaul Seal Kit (Not Shown)
101	*	1	Spacer RTN (Not a Serviceable Part)
102	*	1	Spring, Extension (Not a Serviceable Part)
103	*	1	Screw, 5/16 x .875 (Patch) (Not a Serviceable Part)
104	*	2	Washer .34 x .88 x .06 (Not a Serviceable Part)
105	*	1	Washer, Nylon (Not a Serviceable Part)
106	*	1	Nut, Hex Lock 5/16-24 UNF (Not a Serviceable Part)
107	*	1	Spacer (Not a Serviceable Part)
110	5023430	1	Kit, RTN, STD (Includes Ref. Nos. 94, 98, 100, 101, 102, 103, 104, 104, 105, 106 & 107)

Footnotes

Note* Not a serviceable part.

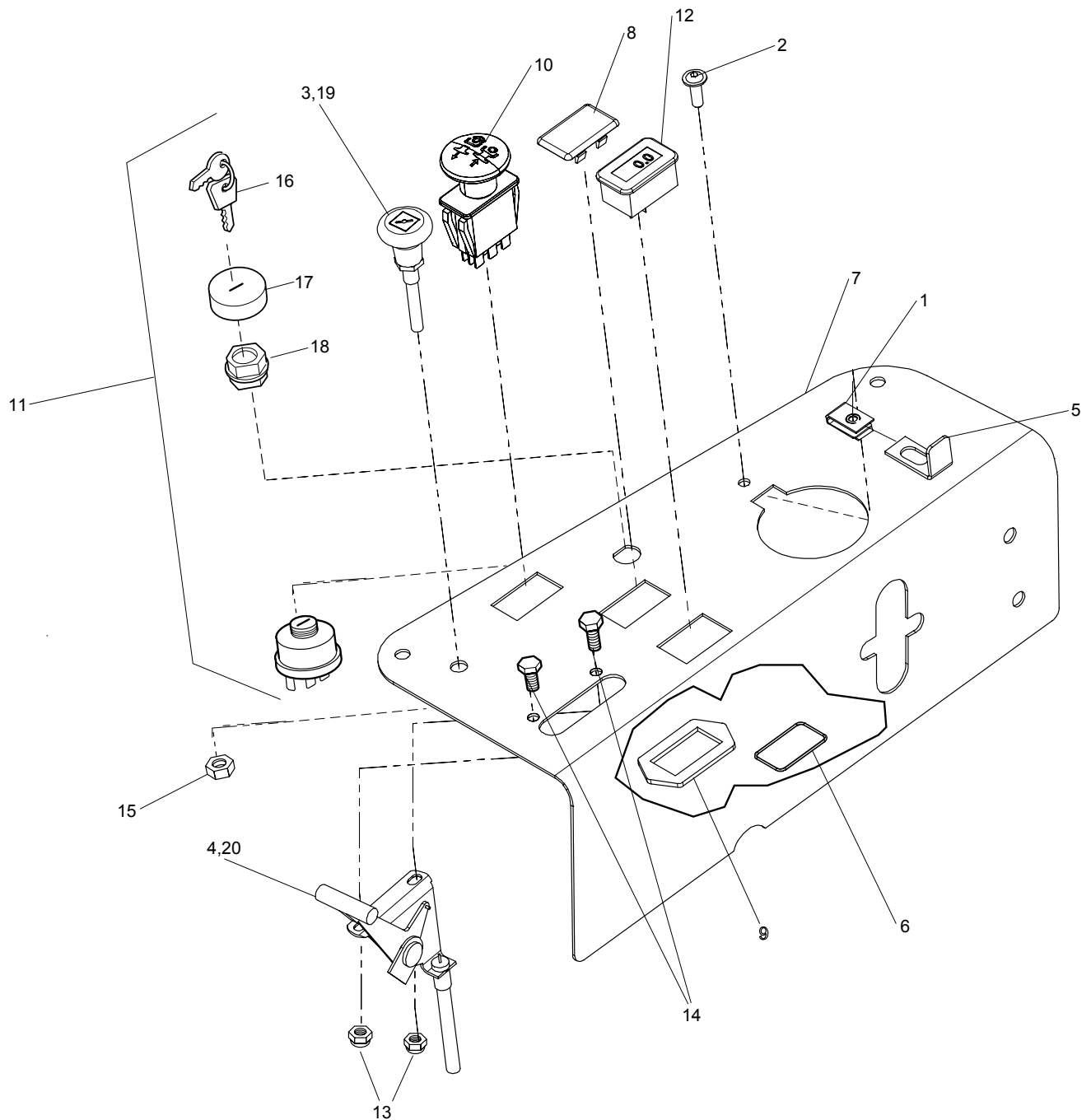
The above parts group applies to the following Mfg. Nos.:

2690449 - Champion
 2690451 - Champion
 2690452 - Champion
 2690483 - Champion
 2690484 - Champion

Control Group Panel

NOTE: Unless noted otherwise,
use the standard hardware torque
specification chart.

276INS0



The above parts group applies to the following Mfg. Nos.:

- 2690449 - Champion
- 2690451 - Champion
- 2690452 - Champion
- 2690483 - Champion
- 2690484 - Champion

Control Group Panel

REF NO	PART NO.	QTY.	DESCRIPTION
1	5022665	1	BODY CLIP, 1/4-20 X .500 DEEP
2	5025299X6	1	SCREW, ALLEN HEAD, 1/4-20 X 3/4"
3	5100184	1	CABLE, CHOKE CONTROL, 43.5" (Briggs & Stratton model only)
4	5100182	1	CABLE THROTTLE CONTROL, 36" (Briggs & Stratton model only)
5	5049022	1	BRACKET, LOCK
6	5022269	1	O-RING, 7/8" ID X 1/16" W
7	5400717A	1	PLATE, CONTROL TANK COVER
8	1709188	1	HOLE, PLUG DASH
9	5022222	1	RING, SWITCH RETAINER, PTO
10	5022180	1	SWITCH, BLADE ENGAGEMENT
11	5020927	1	SWITCH, IGNITION 6 POST (Includes Ref. 16 - 18)
12	1725523	1	HOUR METER-DIGITAL
13	5025095	2	NUT, Hex Nylon Lock, 1/4-20
14	5025010X6	2	BOLT, 1/4-20 x 3/4
15	5025035	1	NUT, 3/8-24 HEX
16	5022789	1	KEY, Ignition Molded (Set of 2)
17	5022790	1	COVER
18	5022791	1	PLASTIC NUT
19	5100185	1	CABLE, CHOKE CONTROL, 30.5" (Kohler model only)
20	5100181	1	CABLE, THROTTLE CONTROL, 27.5" (Kohler model only)

Footnotes

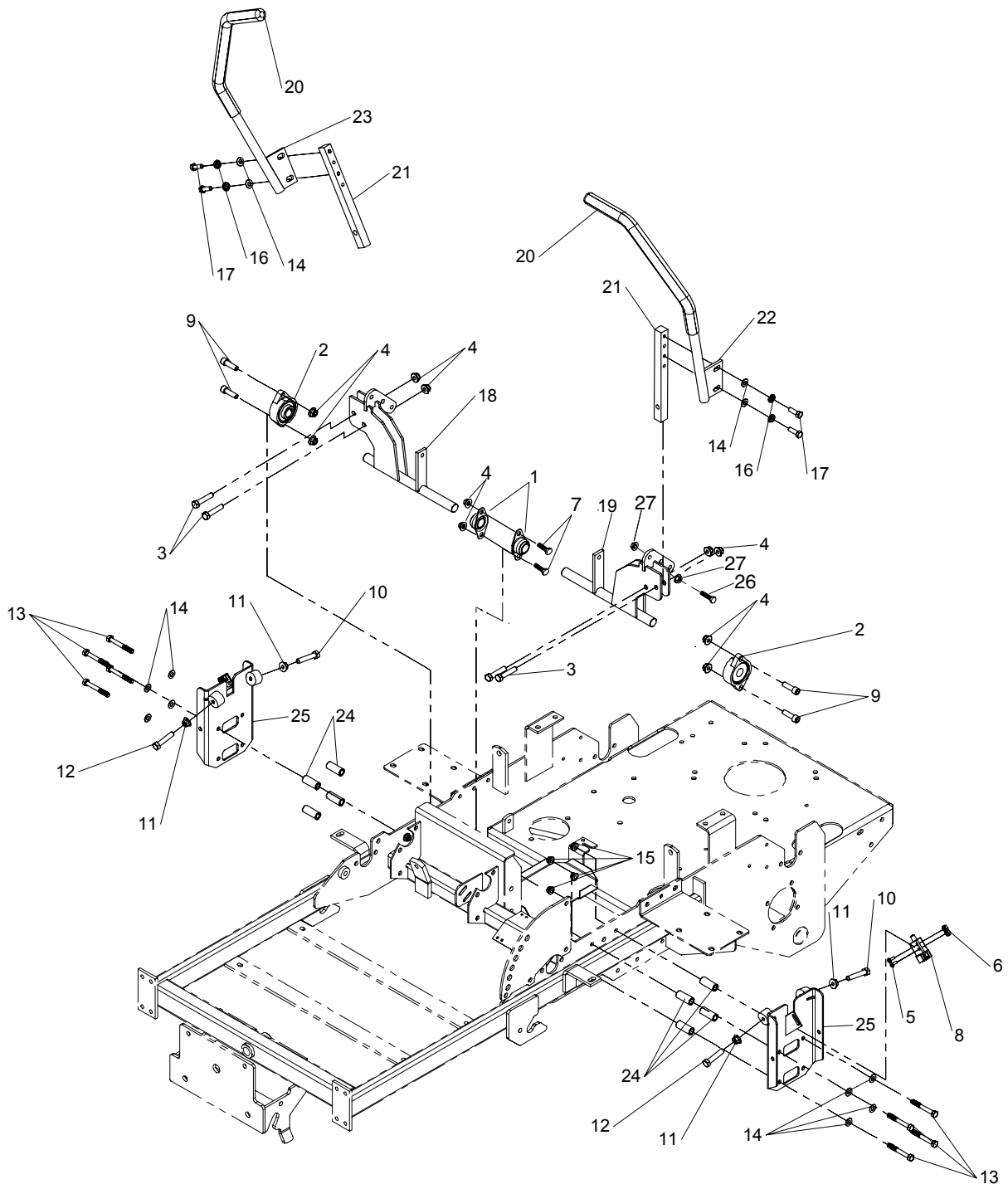
The above parts group applies to the following Mfg. Nos.:

2690449 - Champion
2690451 - Champion
2690452 - Champion
2690483 - Champion
2690484 - Champion

Control Group Upper

276MCG1

NOTE: Unless noted otherwise,
use the standard hardware torque
specification chart.



The above parts group applies to the following Mfg. Nos.:

- 2690449 - Champion
- 2690451 - Champion
- 2690452 - Champion
- 2690483 - Champion
- 2690484 - Champion

Control Group Upper

REF NO	PART NO.	QTY.	DESCRIPTION
1	5021098	2	BEARING, BRONZE FLANGE, 3/4"
2	5021499	2	BEARING, FLANGE
3	5025013X14	4	BOLT, 3/8-16 X 1-3/4" GD5
4	5025394	10	NUT, 3/8-16 HEX NYLOCK FLANGE
5	5025179X4	4	10-24 X .5 SCREW
6	5025029	4	NUT, HEX, #10-24
7	5025013X8	2	BOLT, 3/8-16 X 1" GD5
8	5022095	2	SWITCH, PLUNGER, N.O. / N.C.
9	5025327	4	3/8-16 x 1-1/4 SOCKET HD CAPSCR
10	5025055X16	2	BOLT, 5/16-18 X 2" GD 5 TFL
11	5025139	4	NUT, 5/16-18 HEX LG SERR FLG.
12	5025055X14	2	BOLT, 5/16-18 X 1.75" GD 5 TFL
13	5025011X20	8	BOLT, 5/16-18 X 2-1/2" GD5
14	5025155	12	WASHER, 5/16" SAE
15	5025392	8	NUT, 5/16-18 HEX NYLOCK FLANGE
16	5025170	4	WASHER, 5/16" LOCK
17	5025011X8	4	BOLT, 5/16-18 X 1" GD5
18	5401020C	1	WELD, CONTROL SHAFT- RH
19	5401017C	1	WELD, CONTROL SHAFT- LH
20	5022068	2	GRIP, FOAM, 3/4" ID, 16" LONG
21	5047004	2	MOUNT, CONTROL ARM
22	5401096C	1	WELD, HANDLE MOTION CONTROL-LH
23	5401097C	1	WELD, HANDLE MOTION CONTROL-RH
24	5048264	8	SPACER, .63 X .39 X 1.50
25	5048169C	2	WELD, NEUTRAL PLATE
26	5025011X12	2	BOLT, 5/16-18 X 1-1/2" GD5 YZ
27	5025139	4	NUT, 5/16-18 HEX SERRATED FLANGE (LARGE)

Footnotes

The above parts group applies to the following Mfg. Nos.:

2690449 - Champion
2690451 - Champion
2690452 - Champion
2690483 - Champion
2690484 - Champion

Control Group Lower

REF NO	PART NO.	QTY.	DESCRIPTION
1	5010546	2	COLLAR, 3/8" SET
2	5025214X8	2	PIN, CLEVIS, 3/8" X 1"
3	5025211	2	PIN, HAIR, .0585 X 1-1/8
4	5023242	2	SPRING, CONTROL ROD
5	5023260	2	BUSHING, FLANGE 3/8ID X 7/8 LONG
6	5025057	4	NUT 5/16-18 HEX NYLON LOCK
7	5025011X10	2	BOLT, 5/16-18 X 1-1/4" GD5
8	5025155	6	WASHER, 5/16" SAE
9	5025033	2	NUT, HEX 5/16-24
10	5025045	2	NUT 5/16-24 HEX NYLON LOCK
11	5025011X9	2	BOLT, 5/16-18 X 1-1/8" GD5
12	5023212	2	NUT, 5/16 HEX LH
13	5025335	4	BOLT, M8-1.25 x 35MM
14	5025354	4	NUT, M8-1.25 Hex Nylon Lock
15	5025355	4	NUT, M8-1.25 Hex Serrated Flange
16	5022645	2	SPRING, COMPRESSION
17	5020047	2	SET COLLAR, 5/16"
18	5021171	2	CLEVIS, 3/8-24, PLASTIC
19	5049969	2	ROD, NEUTRAL CONTROL, 8"
20	5022978	2	DAMPENER
21	5022628	2	BALL JOINT, 5/16-24 Female LH
22	5021146	2	BALL JOINT, 5/16-24 Female
23	5048921	2	CONTROL ROD, ADJ. SPRING
24	5048923	2	ROD ASSEMBLY, SLIDER

Footnotes

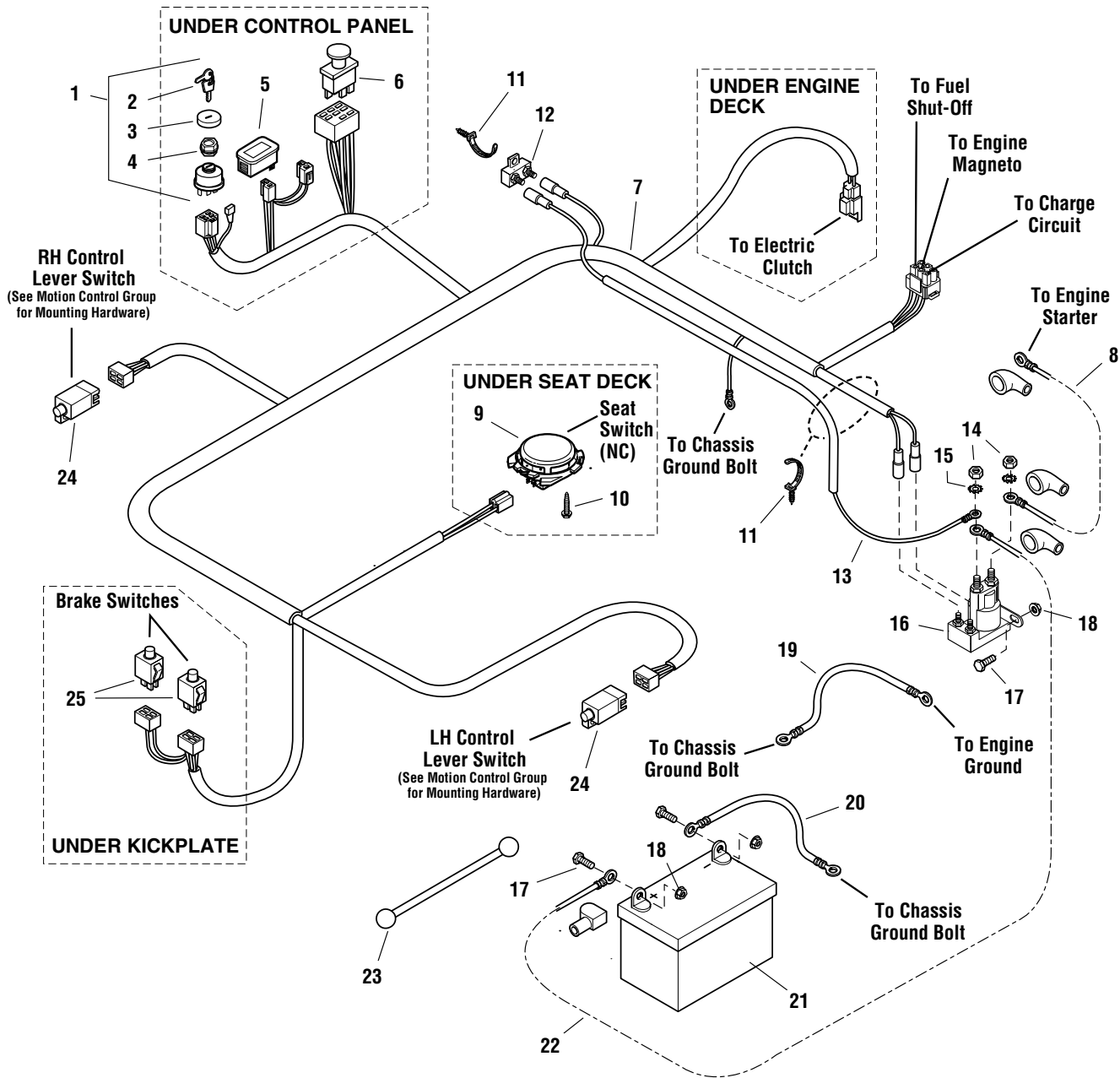
The above parts group applies to the following Mfg. Nos.:

2690449 - Champion
2690451 - Champion
2690452 - Champion
2690483 - Champion
2690484 - Champion

Electrical Group

NOTE: Unless noted otherwise, use the standard hardware torque specification chart.

276EGS0



The above parts group applies to the following Mfg. Nos.:

- 2690449 - Champion
- 2690451 - Champion
- 2690452 - Champion
- 2690483 - Champion
- 2690484 - Champion

Electrical Group

REF NO	PART NO.	QTY.	DESCRIPTION
1	5020927	1	SWITCH, IGNITION, (Includes Ref No. 2-4)
2	5022789	1	KEY, Ignition Molded (Set of 2)
3	5022790	1	COVER
4	5022791	1	PLASTIC NUT
5	1725523	1	HOUR METER, DIGITAL (Includes Retaining Ring)
6	5022180	1	SWITCH, PTO
7	5048640	1	MAIN HARNESS ASSEMBLY
8	5048756	1	CABLE, #6 X 15" LONG, RING TERMINAL
9	1716368	1	SWITCH, SEAT, GRAY, NC
10	1960536	2	BOLT, HEX WASHER HEAD PLASTITE, 1/4 X 1/2
11	5021199	2	CABLE TIE, PUSH MOUNT
12	5023222	1	CIRCUIT BREAKER, 20A
13	5048938	1	CRICUIT BREAKER WIRE ASSEMBLY
14	5023216	2	NUT, HEX JAM, 5/16-24
15	5023217	2	WASHER, LIGHT LOCK, 5/16
16	1724815	1	SOLENOID
17	5025010X6	4	BOLT, 1/4-20 X 3/4
18	5025126	4	NUT, HEX SERRATED FLANGE, 1/4-20
19	5044014	1	CABLE, #6 X 10" LONG, RING TERMINAL
20	5021406	1	CABLE, #6 X 22" LONG, RING TERMINAL
21	5020798	1	BATTERY, 12 VOLT
22	5021542	1	CABLE, #6 X 30" LONG, RING TERMINAL
23	1722009	1	STRAP, BATTERY, 14 LONG, RUBBER
24	5022095	2	SWITCH, PLUNGER, NO/NC
25	5022182	2	SWITCH, PLUNGER, NO/NC, SNAP IN

Footnotes

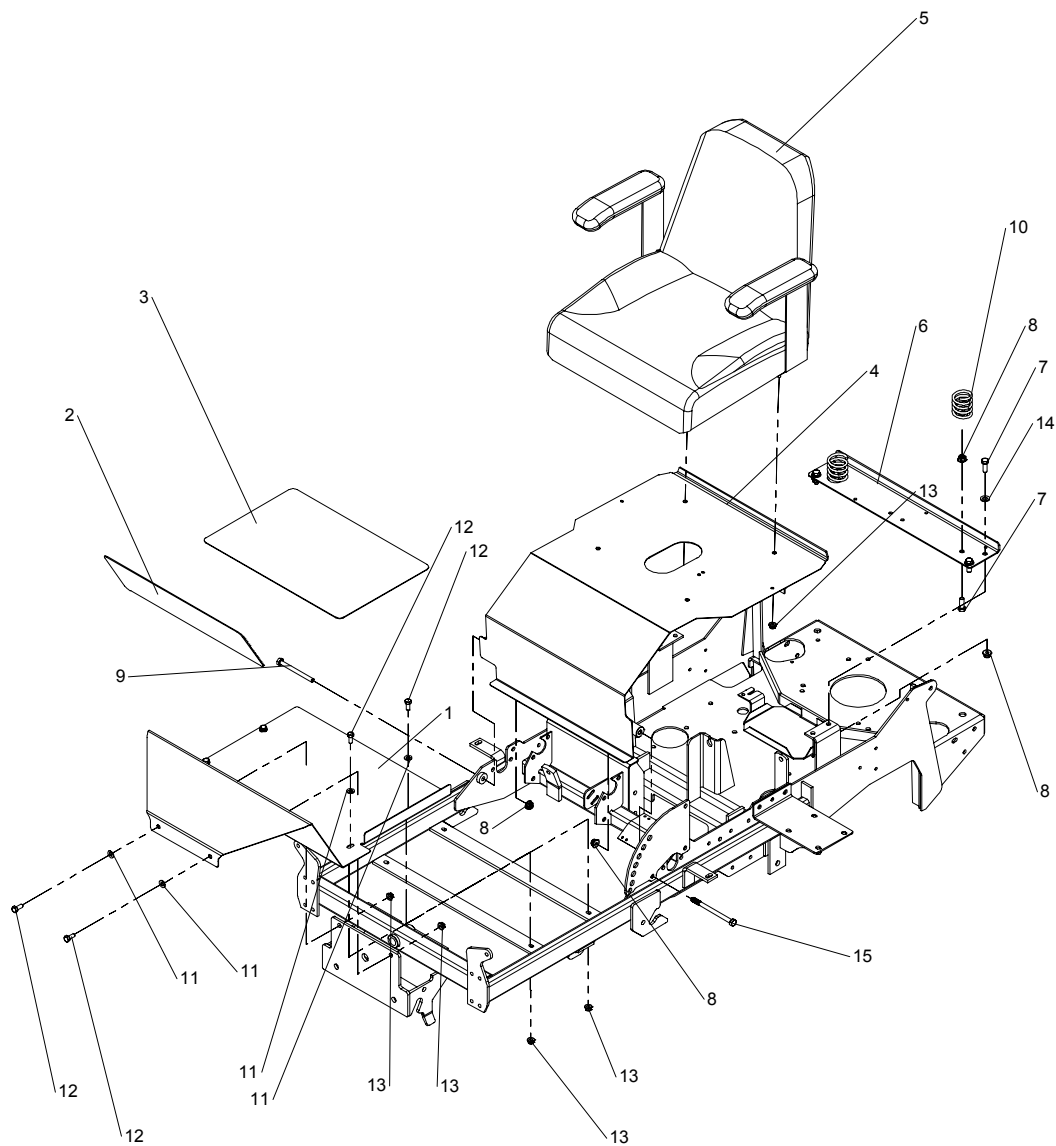
The above parts group applies to the following Mfg. Nos.:

2690449 - Champion
2690451 - Champion
2690452 - Champion
2690483 - Champion
2690484 - Champion

Seat & Kickplate Group

NOTE: Unless noted otherwise,
use the standard hardware torque
specification chart.

276SKP0



The above parts group applies to the following Mfg. Nos.:

- 2690449 - Champion
- 2690451 - Champion
- 2690452 - Champion
- 2690483 - Champion
- 2690484 - Champion

Seat & Kickplate Group

REF NO	PART NO.	QTY.	DESCRIPTION
1	5049978	1	SAFETY WALK, FLOOR PLATE
2	5401027C	1	PLATE, FLOOR DETAIL, CONSUMER Z
3	5049979	1	SAFETY WALK, FLOOR REST
4	5400528C	1	WELD, SEAT PLATE
5	5061599	1	SEAT
6	5400361C	1	MOUNT, OIL FILTER
7	5025013X8	6	BOLT, 3/8-16 X 1" GD5
8	5025394	8	NUT, 3/8-16 HEX NYLOCK FLANGE
9	5025013X32	1	BOLT, 3/8-16 X 4" GD5
10	7078299	2	SPRING, CONTROL ROD
11	5025155	6	WASHER, 5/16" SAE
12	5025011X6	6	BOLT, 5/16-18 X 3/4" GRD5
13	5025392	10	NUT, 5/16-18 HEX NYLOCK FLANGE
14	5025156	4	WASHER 3/8" SAE
15	5025013X40	1	BOLT, 3/8-16 X 5" GD5

Footnotes

The above parts group applies to the following Mfg. Nos.:

2690449 - Champion
2690451 - Champion
2690452 - Champion
2690483 - Champion
2690484 - Champion

Fuel Tank Group

REF NO	PART NO.	QTY.	DESCRIPTION
1	5025011X6	18	BOLT, 5/16-18 X 3/4" GRD5
2	5025155	20	WASHER, 5/16" SAE
3	5025392	8	NUT, 5/16-18 HEX NYLOCK FLANGE
4	5025299X4	2	SCREW, ALLEN HEAD, 1/4-20X1/2
5	5025386	6	SCREW, Allen Head, #10-24 x 3/8"
6	5025170	10	WASHER, 5/16" LOCK
7	5025011X8	2	BOLT, 5/16-18 X 1" GD5
8	5048751	1	FUEL TANK ASSEMBLY (Includes Ref. 17 - 23)
9	5048909C	2	PLATE, FUEL TANK BADGE
10	5048763C	1	BRACKET, REAR SUPPORT - RH
11	5400836C	1	BRACKET, REAR SUPPORT - LH
12	5022158	1	CAP, FUEL TANK, 3-1/2" NECK
13	5048752	1	TANK, FUEL - RH
14	5400919C	1	PLATE, SUPPORT, REAR TANK
15	5023345	1	TANK, 2QT HYDRAULIC
16	5023191	1	CAP, HYDRAULIC RESERVOIR
17	5023061	1	ELBOW FITTING (Not Shown)
18	1654930	1	GROMMET (Not Shown)
19	5050925X20	1	HOSE, 20" (Not Shown)
20	5023069	2	HOSE CLAMP (Not Shown)
21	5023067	1	SCREEN FITTING (Not Shown)
22	5023197	1	FUEL GAUGE (Not Shown)
23	5022917X1	1	GROMMET (Not Shown)

Footnotes

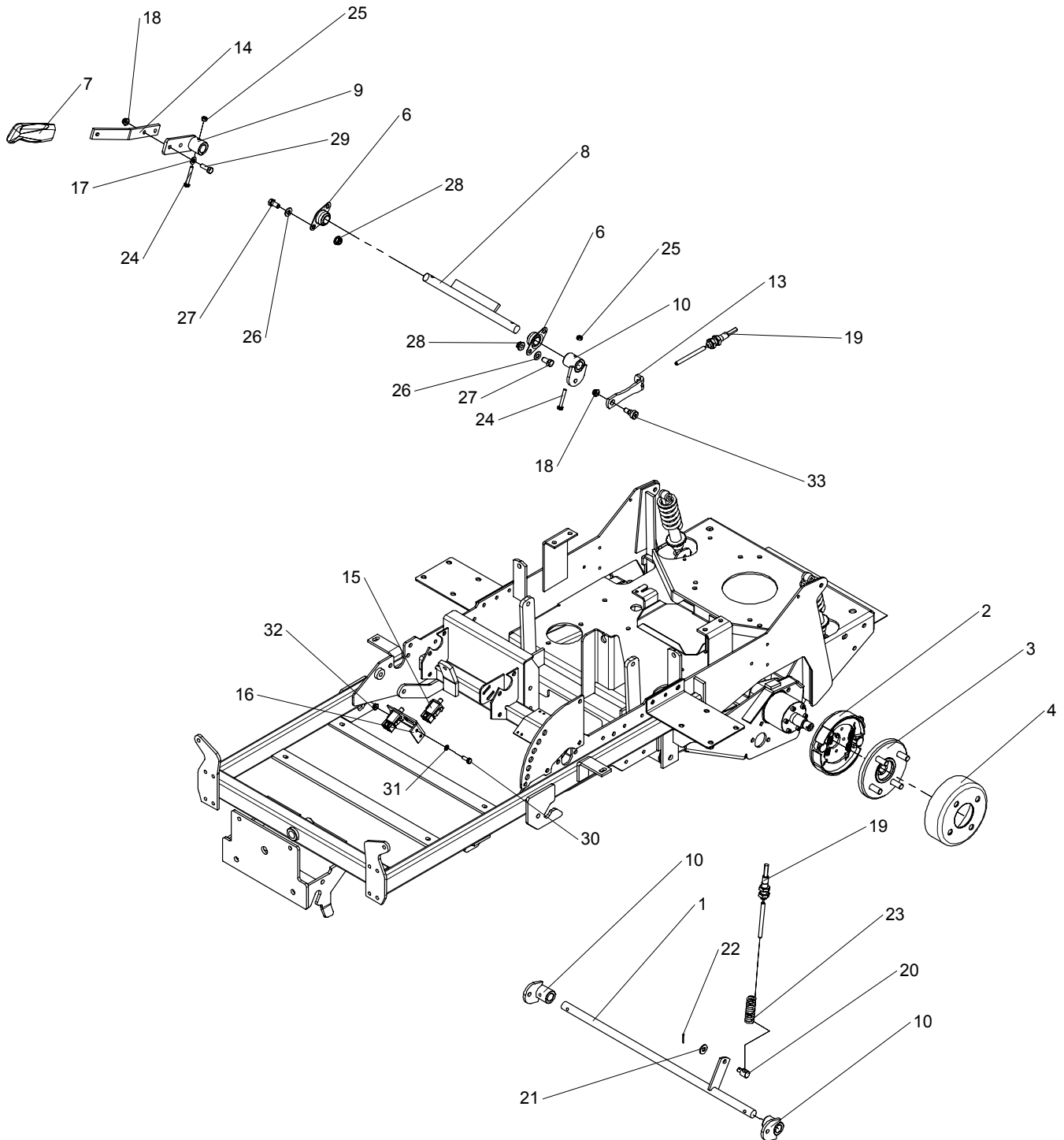
The above parts group applies to the following Mfg. Nos.:

2690449 - Champion
2690451 - Champion
2690452 - Champion
2690483 - Champion
2690484 - Champion

Brake Group

NOTE: Unless noted otherwise, use the standard hardware torque specification chart.

276PBR0



The above parts group applies to the following Mfg. Nos.:

- 2690449 - Champion
- 2690451 - Champion
- 2690452 - Champion
- 2690483 - Champion
- 2690484 - Champion

Brake Group

REF NO	PART NO.	QTY.	DESCRIPTION
1	5401014C	1	WELD, SHAFT, REAR BRAKE
2	5023188	1	BRAKE ASSEMBLY, LH
3	5023309	2	HUB W/ STUDS, 1" TAPER (Unless otherwise specified, RH brake components are identical to the LH side.)
4	5023367	2	DRUM, BRAKE (Unless otherwise specified, RH brake components are identical to the LH side.)
5	5023106	1	BRAKE ASSEMBLY, RH (Part not shown.)
6	5021098	2	BEARING, BRONZE FLANGE 3/4"
7	5100171	1	GRIP, BLACK FLEXIBLE
8	5048163C	1	WELD, SHAFT, BRAKE LEVER
9	5048401C	1	WELD, MOUNT, BRAKE LEVER
10	5045618C	3	WELD, PIVOT LINKAGE MOUNT
11	5025388	2	NUT, 5/16-18 HEX JAM
12	5025045	1	NUT, 5/16-24 HEX NYLON LOCK
13	5401172C	1	LINK, BRAKE LOCK
14	5045619C	1	HANDLE, BRAKE LEVER
15	5022182	2	SWITCH PLUNGER NO/NC SNAP IN
16	5045621C	1	BRACKET, SWITCH MOUNT
17	5025155	7	WASHER, 5/16" SAE
18	5025392	3	NUT, 5/16-18 HEX NYLOCK FLANGE
19	5023324	1	CABLE, PARKING BRAKE (Parking brake cable is routed through hole in Engine Deck.)
20	5045947	1	ADJUSTER, BRAKE LINKAGE
21	5025337	1	WASHER, 5/16" USS
22	5025201X6	1	PIN, COTTER, 3/32" X 3/4"
23	5022361	2	SPRING, BRAKE (Unless otherwise specified, RH brake components are identical to the LH side.)
24	5025010X14	3	BOLT, 1/4-20 X 1.3/4" GD5
25	5025095	3	NUT, 1/4" NYLOC
26	5025156	4	WASHER 3/8" SAE
27	5025013X6	4	BOLT, 3/8-16 X 3/4" GD5
28	5025394	4	NUT, 3/8-16 HEX NYLOCK FLANGE
29	5025011X8	4	BOLT, 5/16-18 X 1" GD5
30	5025010X6	2	BOLT, 1/4-20 X 3/4" GD5
31	5025154	2	WASHER, 1/4" SAE
32	5025126	2	NUT, 1/4-20 HEX SERR. FLANGE
33	5025356	1	SHOULDER BOLT, 3/8-16 X 1/2 X 3/8
34	5021494	2	SPRING, COMPRESSION, 5-1/2 (Unless otherwise specified, RH brake components are identical to the LH side.)
35	5401172C	2	LINK, BRAKE LOCK - ORANGE (Unless otherwise specified, RH brake components are identical to the LH side.)
36	5010546	4	COLLAR 3/8" SET (Unless otherwise specified, RH brake components are identical to the LH side.)
37	5047091	2	ROD, BRAKE ADJUSTMENT (Unless otherwise specified, RH brake components are identical to the LH side.)
38	5025156	2	WASHER, 3/8" SAE

Footnotes

The above parts group applies to the following Mfg. Nos.:

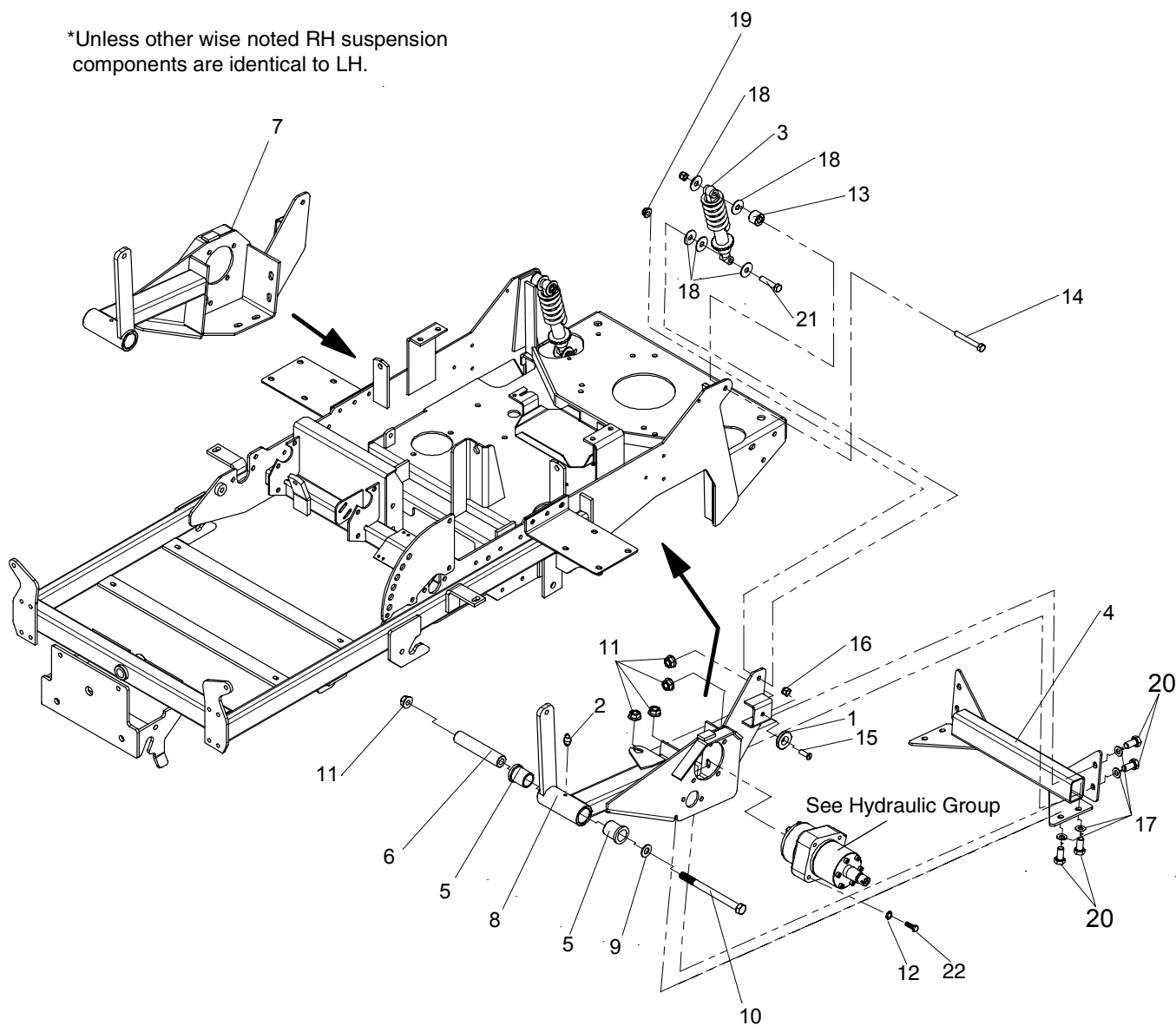
2690449 - Champion
2690451 - Champion
2690452 - Champion
2690483 - Champion
2690484 - Champion

Rear Suspension Group

NOTE: Unless noted otherwise,
use the standard hardware torque
specification chart.

276SUS0

*Unless other wise noted RH suspension
components are identical to LH.



The above parts group applies to the following Mfg. Nos.:

- 2690449 - Champion
- 2690451 - Champion
- 2690452 - Champion
- 2690483 - Champion
- 2690484 - Champion

Rear Suspension Group

REF NO	PART NO.	QTY.	DESCRIPTION
1	5400065	2	SPACER, .34 X 1.54 X .25 - UHMW
2	5020095	2	GREASE FITTING, 1/4-28 STRAIGHT
3	5023213	2	SHOCK
4	5401012C	1	WELD, TIE BAR - ORANGE
5	5021541	4	BUSHING, FLANGE
6	5100194	2	SPACER, .52 X 1.00 X 4.868
7	5400973C	1	TRAILING ARM ASSM., RH
8	5400972C	1	TRAILING ARM ASSM., LH
9	5025158	2	WASHER, 1/2" SAE
10	5025017X52	2	BOLT, 1/2-13 X 6-1/2" GD5
11	5025396	10	NUT, 1/2-13 HEX NYLOCK FLANGE
12	5025171	8	WASHER, 3/8" SPLIT LOCK
13	5045178	2	SPACER, .52 X 1.00 X .75
14	5025013X22	2	BOLT, 3/8-16 X 2-3/4" GD5
15	5025303	2	SCREW 5/16-18 X 1 FLAT HD SC
16	5025096	2	NUT, 3/8-16 HEX NYLON LOCK
17	5025156	8	WASHER 3/8" SAE
18	5025165	10	WASHER, 3/8" FENDER
19	5025394	3	NUT, 3/8-16 HEX NYLOCK FLANGE
20	5025017X8	8	BOLT, 1/2-13X1
21	5025013X14	2	BOLT, 3/8-16 X 1-3/4" GD5
22	5025013X8	8	BOLT, 3/8-16 X 1" GD5 YZ

Footnotes

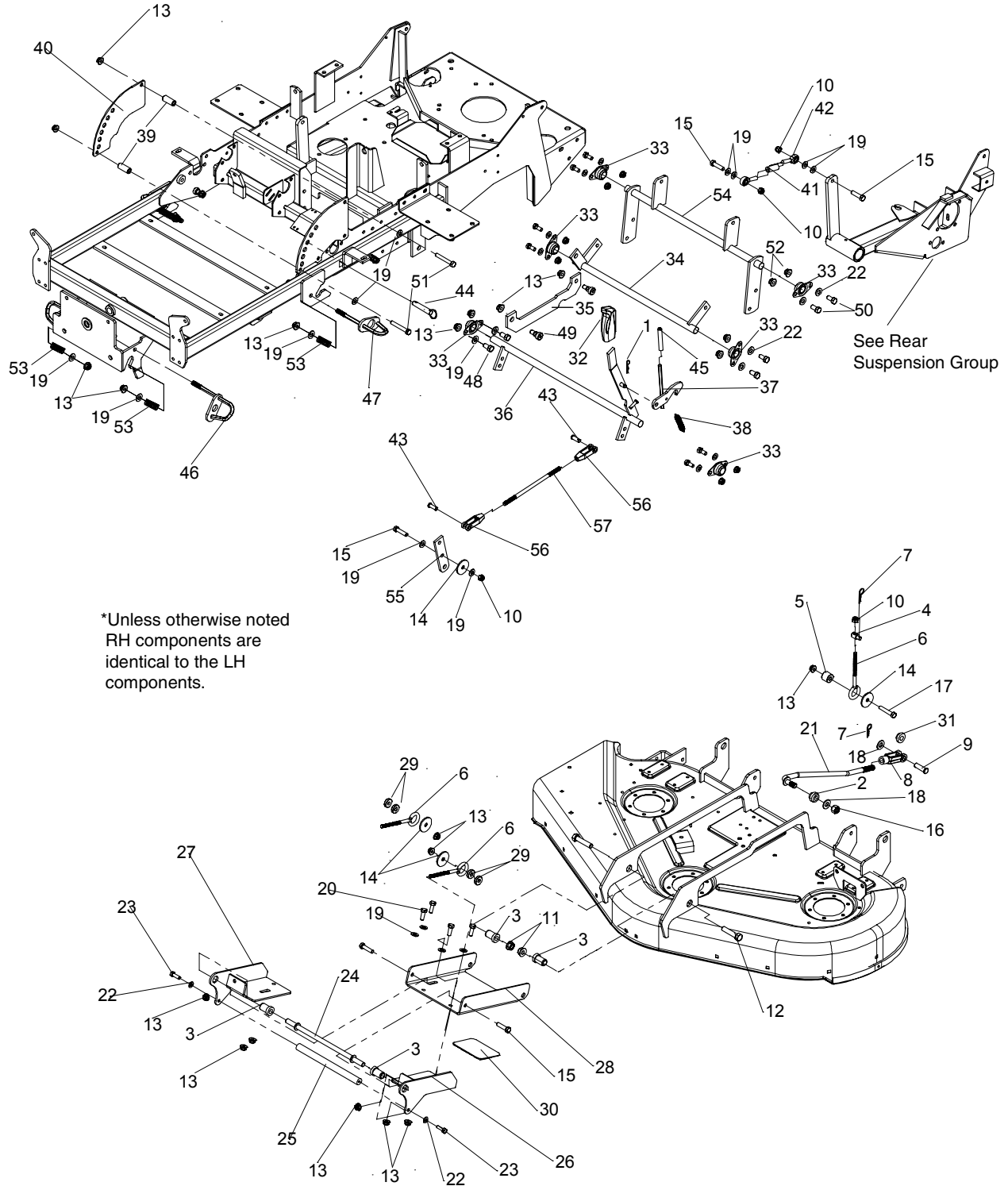
The above parts group applies to the following Mfg. Nos.:

2690449 - Champion
2690451 - Champion
2690452 - Champion
2690483 - Champion
2690484 - Champion

Lift Group

NOTE: Unless noted otherwise, use the standard hardware torque specification chart.

276DLT0



*Unless otherwise noted
RH components are
identical to the LH
components.

The above parts group applies to the following Mfg. Nos.:

- 2690449 - Champion
- 2690451 - Champion
- 2690452 - Champion
- 2690483 - Champion
- 2690484 - Champion

Lift Group

REF NO	PART NO.	QTY.	DESCRIPTION
1	5025202X12	1	PIN, Cotter, 3/16 X 1-1/2
2	5100351	2	BUSHING, REAR QUICK TACH
3	5100144	4	SPACER, .53 X 1.00 X 1.44
4	5045947	2	ADJUSTER, BRAKE LINKAGE
5	5047125	2	SPACER, .39 X 1.00 X .88
6	5021812	4	EYE BOLT, 3/8-16 X 6" , 1" EYE
7	5025210	4	3/32 X 1-5/8 HAIR PIN CLIP N/A
8	5023174	2	CLEVIS , 1/2-20, STEEL
9	5025328X12	2	PIN CLEVIS 1/2" X 1-1/4"
10	5025096	7	NUT, 3/8-16 HEX NYLON LOCK
11	5025396	2	NUT, 1/2-13 HEX NYLOCK FLANGE
12	5025017X18	2	BOLT, 1/2-13 X 2-1/4" GD5
13	5025394	22	NUT, 3/8-16 HEX NYLOCK FLANGE
14	5025305	5	WASHER, .41 X 1.75 X .14
15	5025013X12	6	BOLT, 3/8-16 X 1-1/2" GD5
16	5025098	2	NUT, 1/2-20 HEX NYLON LOCK
17	5025013X16	2	BOLT, 3/8-16 X 2" GD5
18	5025158	4	WASHER, 1/2" SAE
19	5025156	16	WASHER 3/8" SAE
20	5025013X8	4	BOLT, 3/8-16 X 1" GD5
21	5100170	2	ROD, DECK LIFT, LINKAGE
22	5025155	10	WASHER, 5/16" SAE
23	5025011X8	2	BOLT, 5/16-18 X 1" GD5
24	5100177	1	SHAFT, HANGER
25	5100135	1	SHAFT, HANDLE, DECK SUPPORT
26	5400391C	1	WELD, DECK HANGER, LH
27	5400392C	1	WELD, DECK HANGER, RH
28	5400382C	1	PLATE, DECK HANGER SUPPORT
29	5044960	4	SPACER, .39 X 1.00 X .25
30	5044875	1	SAFETY WALK, 4.50 X 3.50
31	5048258	2	BUSHING, DECK SUPPORT
32	5100171	1	GRIP, BLACK FLEXIBLE
33	5021098	6	BEARING, BRONZE FLANGE 3/4"
34	5401031C	1	WELD, DECK LIFT HANGER REAR - ORANGE
35	5401054C	1	LINK, DECK LIFT SHAFT - ORANGE
36	5401055C	1	WELD, DECK HEIGHT SHAFT - ORANGE
37	5048884C	1	WELD, DECK LOCK - ORANGE
38	5020639	1	SPRING, EXTENSION
39	5048264	2	SPACER, .63 X .39 X 1.50
40	5400370C	1	PLATE, INNER DECK HEIGHT
41	5100323	2	SLEEVE, .32 X .63 X 1.50, TAPPED 3/8 X 24
42	5021124	4	BALL JOINT, 3/8-24 MALE
43	5025214X8	2	PIN, CLEVIS, 3/8 X 1
44	5100179	1	HITCH PIN, 1/2" X 2-1/2"

Footnotes

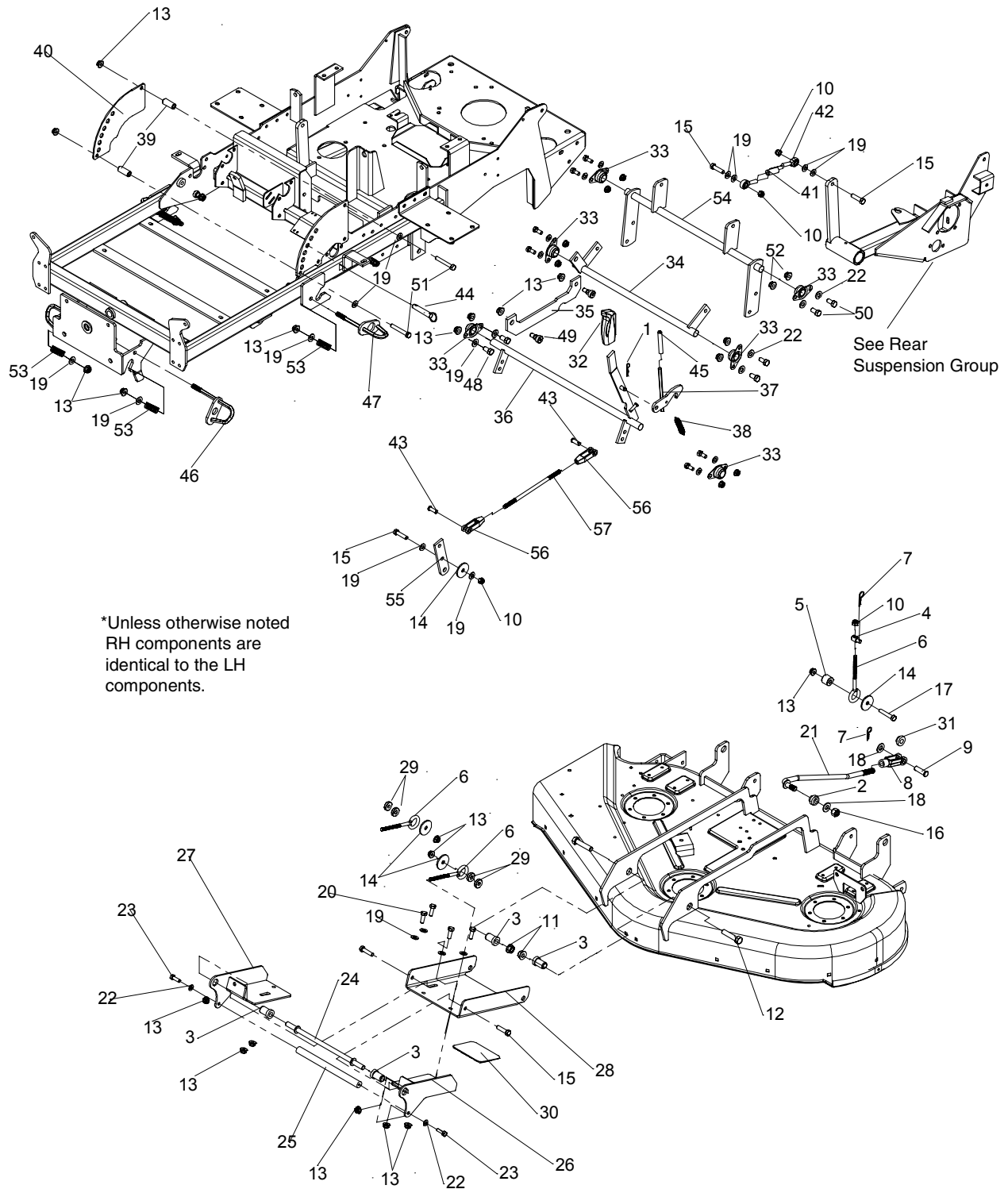
The above parts group applies to the following Mfg. Nos.:

2690449 - Champion
2690451 - Champion
2690452 - Champion
2690483 - Champion
2690484 - Champion

Lift Group

NOTE: Unless noted otherwise, use the standard hardware torque specification chart.

276DLT0



*Unless otherwise noted
RH components are
identical to the LH
components.

The above parts group applies to the following Mfg. Nos.:

- 2690449 - Champion
- 2690451 - Champion
- 2690452 - Champion
- 2690483 - Champion
- 2690484 - Champion

Lift Group

REF NO	PART NO.	QTY.	DESCRIPTION
45	5023198	1	COVER, VINYL HANDLE
46	5400401C	2	WELD, QUICK RELEASE HANDLE, FRONT
47	5400839C	2	WELD, QUICK RELEASE HANDLE, REAR
48	5025013X6	4	BOLT, 3/8-16 X 3/4" GD5
49	5025356	2	SHOULDER BOLT, 3/8-16 X 1/2 X 3/8
50	5025011X6	8	BOLT, 5/16-18 X 3/4" GRD5
51	5025013X20	2	BOLT, 3/8-16 X 2-1/2" GD5
52	5025393	8	NUT, 5/16-24 HEX NYLOCK FLANGE
53	5021102	4	SPRING
54	5401052C	1	WELD, COMPENSATOR ASSM. - ORANGE
55	5048698C	1	LINK, ROLLER REVERSE - ORANGE
56	5021171	2	CLEVIS, 3/8-24 PLASTIC
57	5048707	1	ROD, LEVER CONNECTING

Footnotes

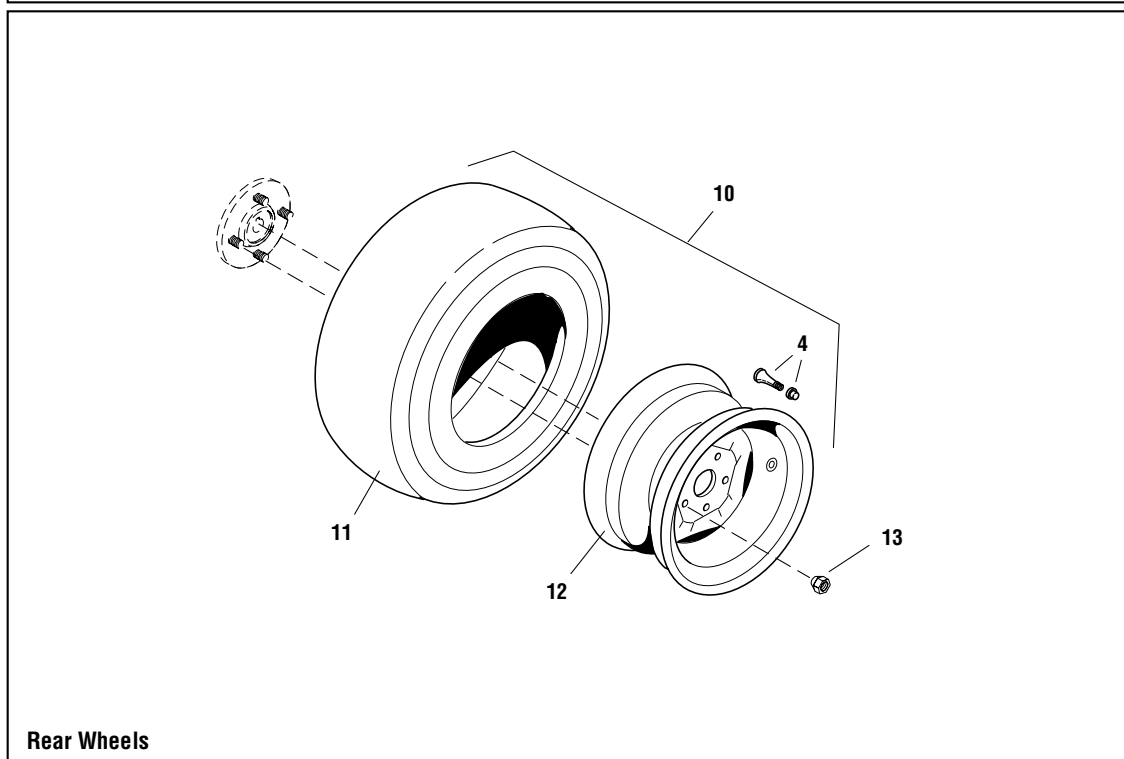
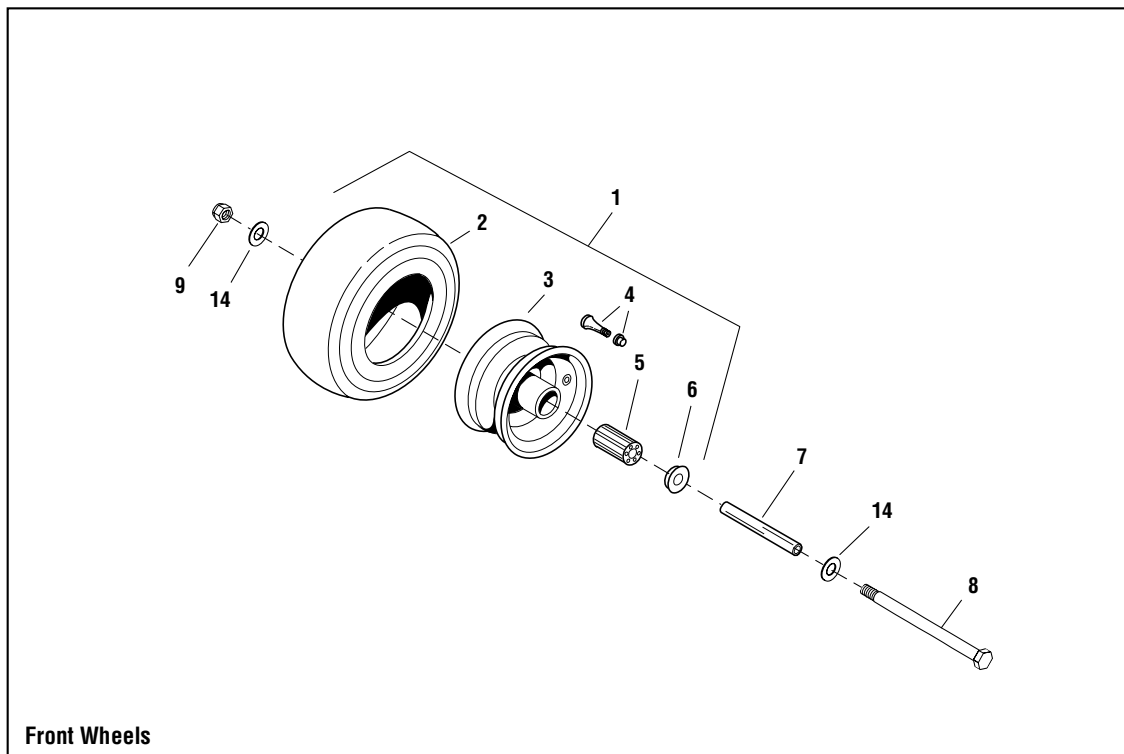
The above parts group applies to the following Mfg. Nos.:

2690449 - Champion
2690451 - Champion
2690452 - Champion
2690483 - Champion
2690484 - Champion

Wheel & Tire Group

NOTE: Unless noted otherwise,
use the standard hardware torque
specification chart.

276WHL0



The above parts group applies to the following Mfg. Nos.:

- 2690449 - Champion
- 2690451 - Champion
- 2690452 - Champion
- 2690483 - Champion
- 2690484 - Champion

Wheel & Tire Group

REF NO	PART NO.	QTY.	DESCRIPTION
1	5022433S	2	WHEEL & TIRE ASSEMBLY, 11 X 4.0 - 5, COMPLETE (Includes Ref No. 2 - 6)
2	5022433X1	2	TIRE, FRONT, 11 X 4.0 - 5
3	5022433S2	2	WHEEL ASSEMBLY, COMPLETE (Includes Ref No. 4 & 5)
4	2172353	4	VALVE STEM & CAP ASSEMBLY
5	5021042	4	BEARING, ROLLER (2 Per Tire)
6	5021043	4	BEARING RETAINER (2 Per Tire)
7	5045996	2	AXLE, FRONT CASTER
8	5025017X52	2	BOLT, 1/2-13 X 6-1/2
9	5025056	2	NUT, HEX NYLON LOCK, 1/2-13
10	5023095	2	WHEEL & TIRE ASSEMBLY, 20 X 8.0 - 10, COMPLETE (Includes Ref No. 4, 11 & 12)
11	5023095X1	2	TIRE, REAR, 20 X 8.0 X 10
12	5023095X2	2	WHEEL ASSEMBLY, FOR 20 X 8.0 X 10 TIRE
13	5020601	8	LUG NUT, 1/2-20
14	5025158	4	WASHER, SAE, 1/2

Footnotes

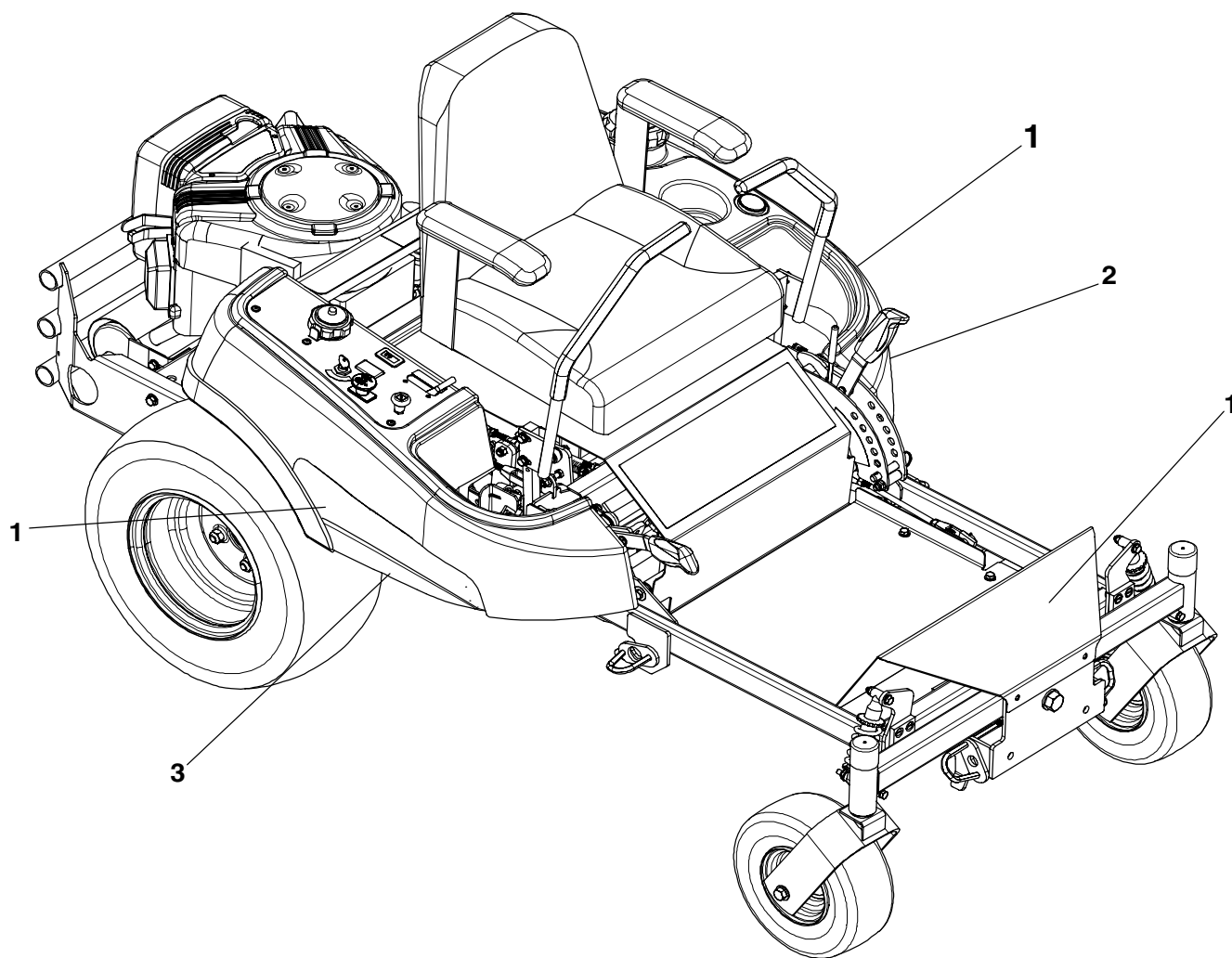
The above parts group applies to the following Mfg. Nos.:

2690449 - Champion
2690451 - Champion
2690452 - Champion
2690483 - Champion
2690484 - Champion

Decals Group - Brand & Model

276DCL0

NOTE: Unless noted otherwise,
use the standard hardware torque
specification chart.



The above parts group applies to the following Mfg. Nos.:

2690449 - Champion
2690451 - Champion
2690452 - Champion
2690483 - Champion
2690484 - Champion

Decals Group - Brand & Model

REF NO	PART NO.	QTY.	DESCRIPTION
1	1722551	3	DECAL, SIMPLICITY LOGO, GV3079178
2	5023228	1	DECAL, STRIPE, LH, SIMPLICITY
3	5023229	1	DECAL, STRIPE, RH, SIMPLICITY

Footnotes

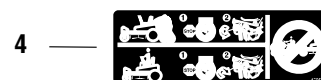
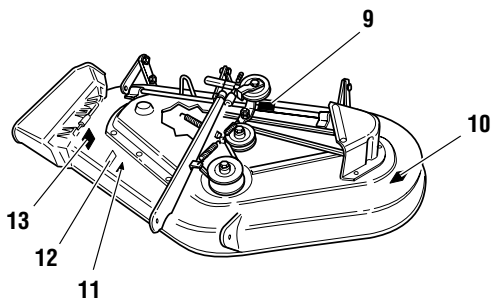
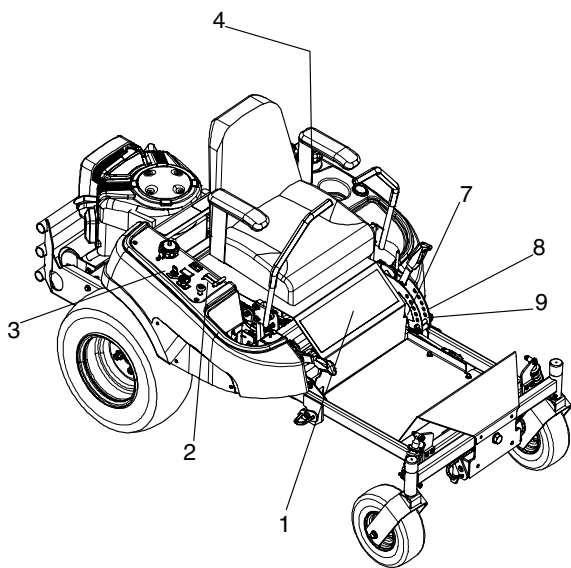
The above parts group applies to the following Mfg. Nos.:

2690449 - Champion
2690451 - Champion
2690452 - Champion
2690483 - Champion
2690484 - Champion

Decals Group - Safety & Common

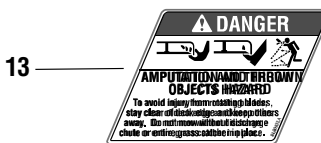
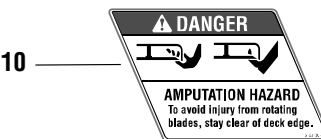
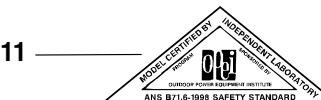
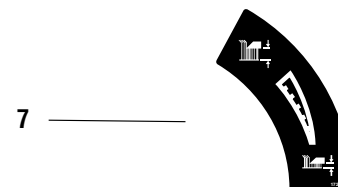
NOTE: Unless noted otherwise, use the standard hardware torque specification chart.

276DCL1



Belts & Blades	
Tractor	
Pump Drive Belt	5022921
4.5' Mower	
Deck Drive Belt	5023236
Mower Blade	1704100
50" Mower	
Deck Drive Belt	5023235
Mower Blade	1702229

TOUCH-UP PAINT PART NUMBERS	
12 Oz. Spray Can Paint	
Deep Orange	1685611
Solar Black	1686779



The above parts group applies to the following Mfg. Nos.:

- 2690449 - Champion
- 2690451 - Champion

Decals Group - Safety & Common

REF NO	PART NO.	QTY.	DESCRIPTION
1	5100252	1	DECAL, MAIN
2	5100280	1	DECAL, THROTTLE CONTROL
3	5048970	1	DECAL, IGNITION SWITCH
4	1725941	1	DECAL, CZT HYDRO RELEASE
5	5048907	1	DECAL, BELT & BLADE (Located Under Seat Plate)
6	1720454	1	DECAL-TOUCH UP PAINT (Located Under Seat Plate)
7	1725703	1	DECAL, HEIGHT OF CUT
8	*	1	DECAL, US PATENT, ZTR
9	*	1	DECAL, ID PLATE
10	5100136	1	DECAL, DANGER, MOWER
11	*	1	DECAL-OPEI CERTIFIED ANSI B71.12003 GOLD
12	1722788	1	DECAL-44"- SILVER ON BLACK W/STRIPE
12	1722790	1	DECAL-50"- SILVER ON BLACK W/STRIPE
13	5100137	1	DECAL, DANGER, MOWER DISCHARGE

Footnotes

Note* Not a serviceable part.

The above parts group applies to the following Mfg. Nos.:

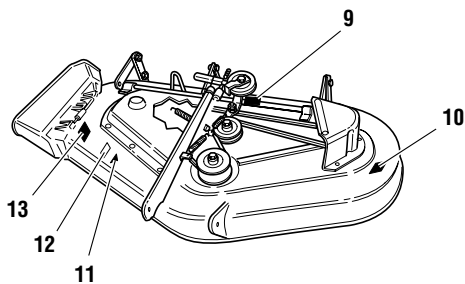
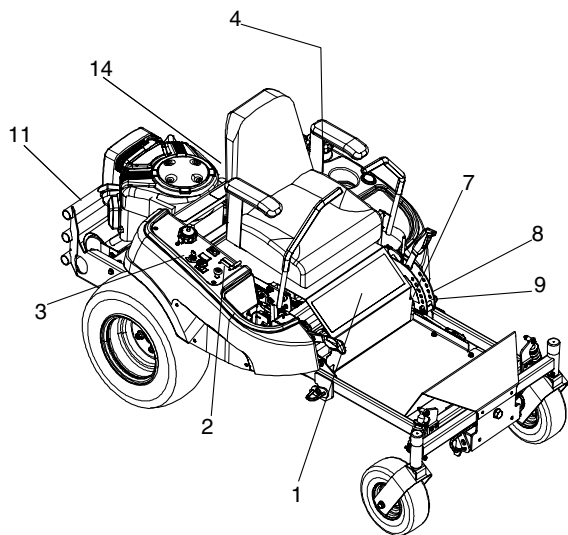
2690449 - Champion

2690451 - Champion

Export Decals Group - Safety & Common

NOTE: Unless noted otherwise, use the standard hardware torque specification chart.

276DCL2

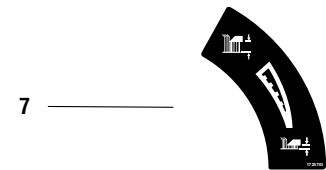


5 —

Belts & Blades	
Tractor	902931
Pump Drive Belt	902931
44" Mower Deck Drive Belt	902296
Mower Blade	1704100
50" Mower Deck Drive Belt	902395
Mower Blade	170220

6 —

TOUCH-UP PAINT PART NUMBERS	
12 Oz. Spray Can Paint	
Deep Orange	1685811
Soft Black	1686779



The above parts group applies to the following Mfg. Nos.:

- 2690452 - Champion
- 2690483 - Champion
- 2690484 - Champion

Export Decals Group - Safety & Common

REF NO	PART NO.	QTY.	DESCRIPTION
1	5061108	1	DECAL, MAIN CE
2	5100280	1	DECAL, THROTTLE CONTROL
3	5048970	1	DECAL, IGNITION SWITCH
4	1725941	1	DECAL, CZT HYDRO RELEASE
5	5048907	1	DECAL, BELT & BLADE (Located Under Seat)
6	1720454	1	DECAL-TOUCH UP PAINT (Located Under Seat)
7	1725703	1	DECAL, HEIGHT OF CUT
8	*	1	DECAL, US PATENT, ZTR
9	*	1	DECAL, ID PLATE
10	5061042	2	DECAL, CE DANGER
11	1704473	1	DECAL, HOT
12	1722788	1	DECAL-44"- SILVER ON BLACK W/STRIPE
12	1722790	1	DECAL-50"- SILVER ON BLACK W/STRIPE
13	1720389	2	DECAL-DANGER ROTATING BLADE SYMBOLS
14	5061217	1	DECAL, DANGER, CE

Footnotes

Note* Not a serviceable part.

The above parts group applies to the following Mfg. Nos.:

2690452 - Champion

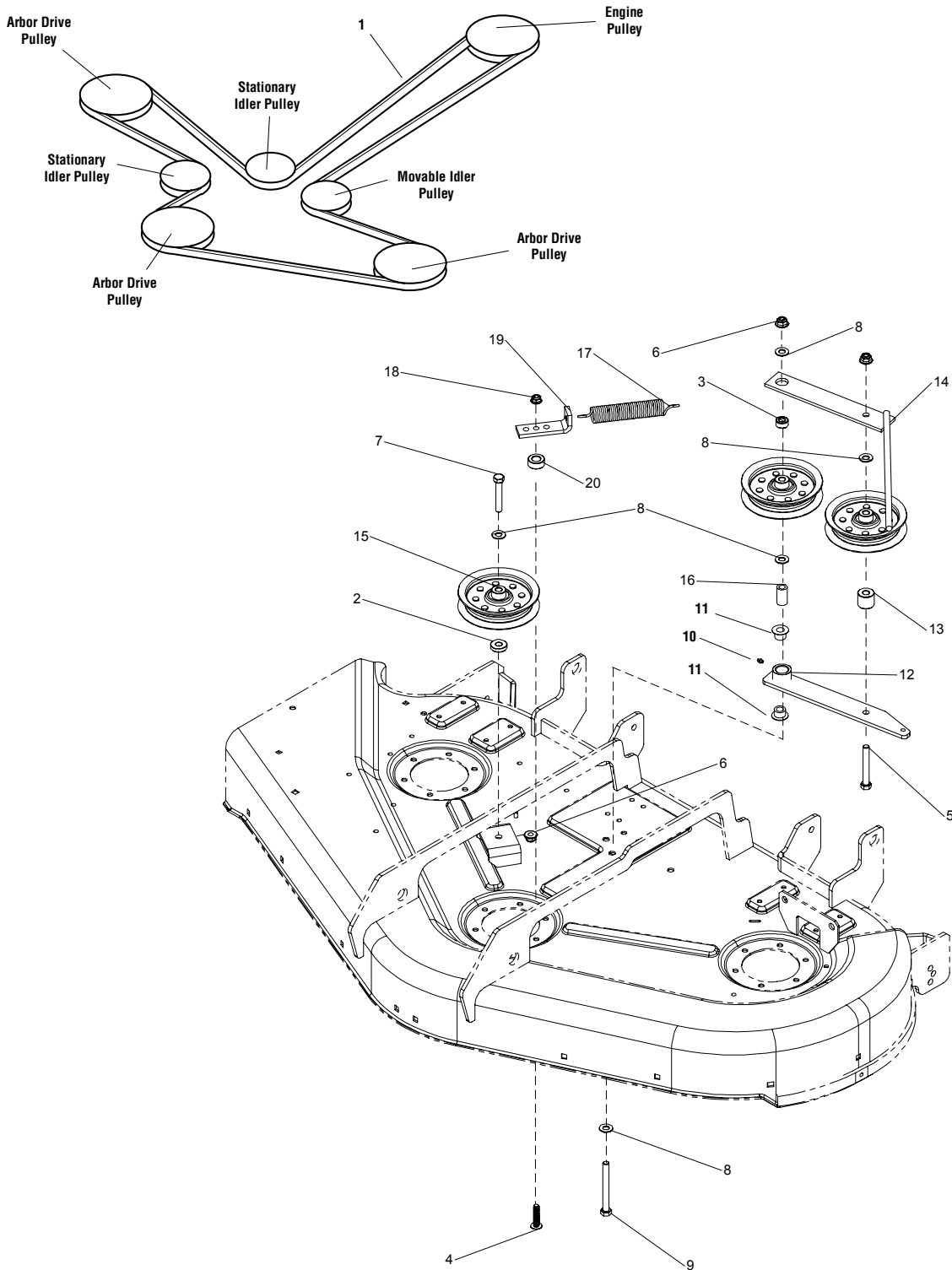
2690483 - Champion

2690484 - Champion

44" & 50" Mower Deck - Belt & Idler Group

2764PB0

NOTE: Unless noted otherwise,
use the standard hardware torque
specification chart.



The above parts group applies to the following Mfg. Nos.:

- 2690449 - Champion
- 2690451 - Champion
- 2690452 - Champion
- 2690483 - Champion
- 2690484 - Champion

44" & 50" Mower Deck - Belt & Idler Group

REF NO	PART NO.	QTY.	DESCRIPTION
1	5023255	1	BELT (For 50" Deck Only)
1	5023256	1	BELT (For 44" Deck Only)
2	5044960	1	SPACER, .39 X 1.00 X .25
3	5044933	1	SPACER, .39 X .75 X .38
4	5023157	1	BOLT, 5/16-18 X 1-1/2" FLANGE
5	5025013X22	1	BOLT, 3/8-16 X 2-3/4" GD5
6	5025394	3	NUT, 3/8-16 HEX NYLOCK FLANGE
7	5025013X18	1	BOLT, 3/8-16 X 2-1/4" GD5
8	5025156	5	WASHER 3/8" SAE
9	5025013X28	1	BOLT, 3/8-16 X 3-1/2" GD5
10	5020095	1	FITTING, GREASE
11	1676148	2	BUSHING, 5/8 X 3/4 X 13/32, POWDER METAL
12	5400398C	1	ASSM, IDLER ARM 44" SIMPLICITY
13	5047125	1	SPACER, .39 X 1.00 X .88
14	5400402C	1	WELD, MOUNT, IDLER, TENSION
15	5049003C	3	ASSM, PULLEY IDLER
16	1674669	1	SPACER
17	1715435	1	SPRING, EXTEN, 1.0 OD, 6" LG, .118
18	5025392	1	NUT, 5/16-18 HEX NYLOCK FLANGE
19	5048383C	1	ANCHOR, SPRING
20	5045023	1	SPACER, .52 X 1.00 X .44

Footnotes

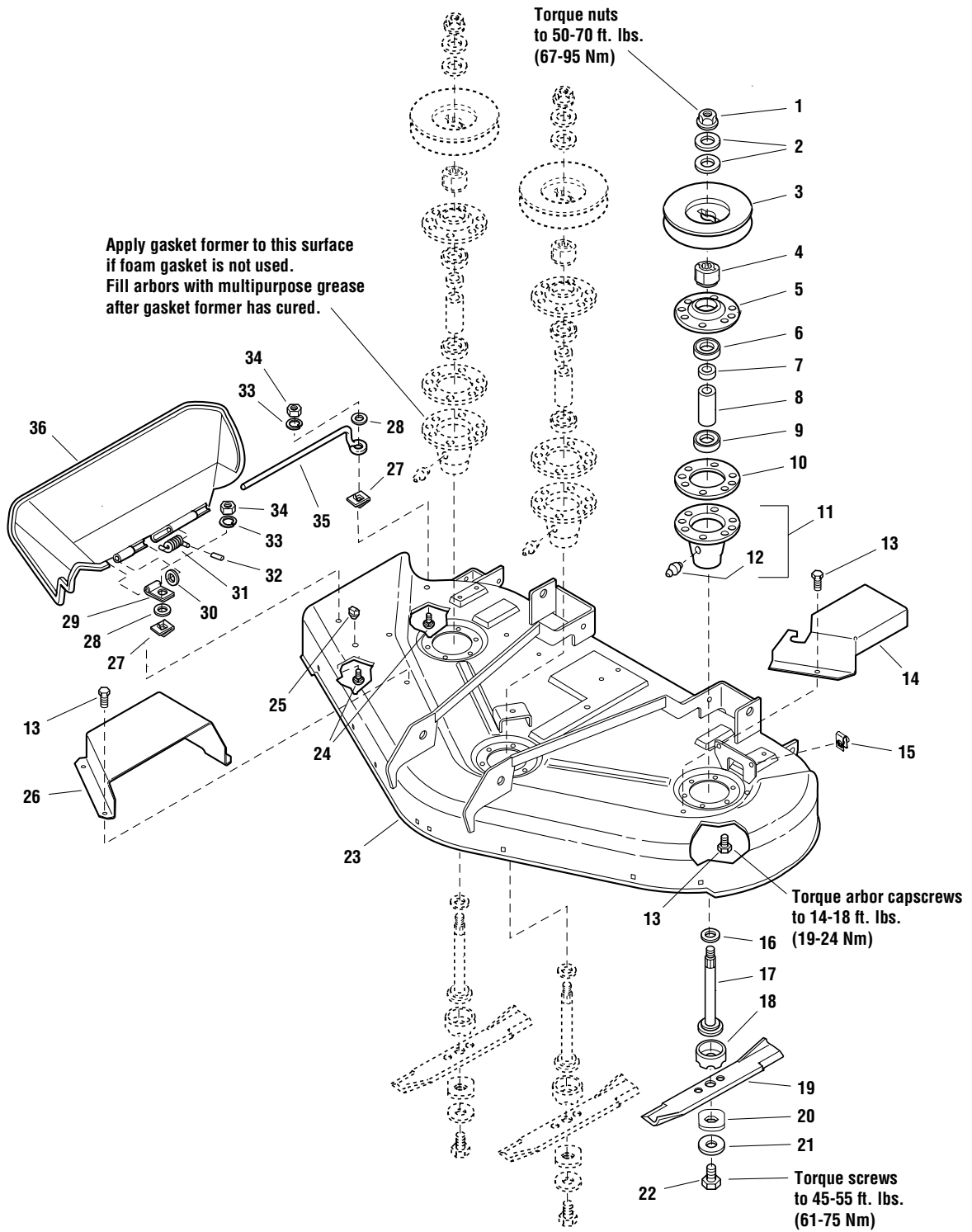
The above parts group applies to the following Mfg. Nos.:

2690449 - Champion
2690451 - Champion
2690452 - Champion
2690483 - Champion
2690484 - Champion

44" & 50" Mower Deck - Housing, Arbors & Blades Group

NOTE: Unless noted otherwise, use the standard hardware torque specification chart.

2764HC0



The above parts group applies to the following Mfg. Nos.:

- 2690449 - Champion
- 2690451 - Champion
- 2690452 - Champion
- 2690483 - Champion
- 2690484 - Champion

44" & 50" Mower Deck - Housing, Arbors & Blades Group

REF NO	PART NO.	QTY.	DESCRIPTION
1	1714419	3	NUT, HEX FLANGE, 9/16-18
2	1713675	6	WASHER, BELLEVILLED, 9/16
3	1713161	3	PULLEY
4	1713613	3	HUB
5	1655729	3	COVER, ARBOR HOUSING
6	2108202	3	BEARING, BALL, 3/4 X 1-3/4 X 5/8
7	1715724	3	SPACER, 21/32 X 3/4 X 5/8
8	1715723	3	SPACER, 11/16 X 5/32 X 2-11/16
9	1705897	3	BEARING, BALL, 11/16 X 1-9/16 X 15/32
10	1707335	3	SEAL, FOAM
11	1713338A	3	HOUSING ASSEMBLY, Arbor Bottom, w/Lube Fitting (Includes Ref No. 12)
12	1704314	3	FITTING, GREASE
13	1664847	24	BOLT TAPTITE, 5/16-18 X 3/4
14	5400403C	1	COVER, ARBOR, LH
15	5022308	2	BODY CLIP, 5/16-18
16	1713619	3	WASHER, 9/16, BLACK
17	1713609	3	SHAFT, ARBOR
18	1713196	3	SHIELD, GRASS, LOWER
19	1704100	3	BLADE, MOWER, 16-1/8 (For 44" Deck)
19	1708229	3	BLADE, MOWER, 18-1/8 (For 50" Deck)
20	1713089	3	WASHER, HEX, 11/16 X 2
21	1656916	3	WASHER, SPRING, 15/32, BLACK
22	2923471	3	BOLT, 7/16-14 X 1-1/4
23	5401058C	1	MOWER HOUSING ASSEMBLY, 44" MOWER (includes decals)
23	5401059C	1	MOWER HOUSING ASSEMBLY, 50" MOWER (includes decals)
24	1931318	2	CARRIAGE BOLT, 1/4-20 X 7/8
25	1705115	1	PLUG, HOLE
26	5401091C	1	COVER, ARBOR, RH
27	1960518	2	NUT, PUSH
28	1960353	2	WASHER, 1/4, BLACK
29	1704873	1	CLAMP
30	1919326	1	WASHER, 5/16, BLACK
31	1723938	1	SPRING
32	1723323	1	VINYL CAP
33	1916964	2	WASHER, LOCK, 1/4
34	1916622	2	NUT, HEX, 1/4-20
35	5049245	1	ROD, DEFLECTOR
36	1705449	1	DEFLECTOR, PLASTIC

Footnotes

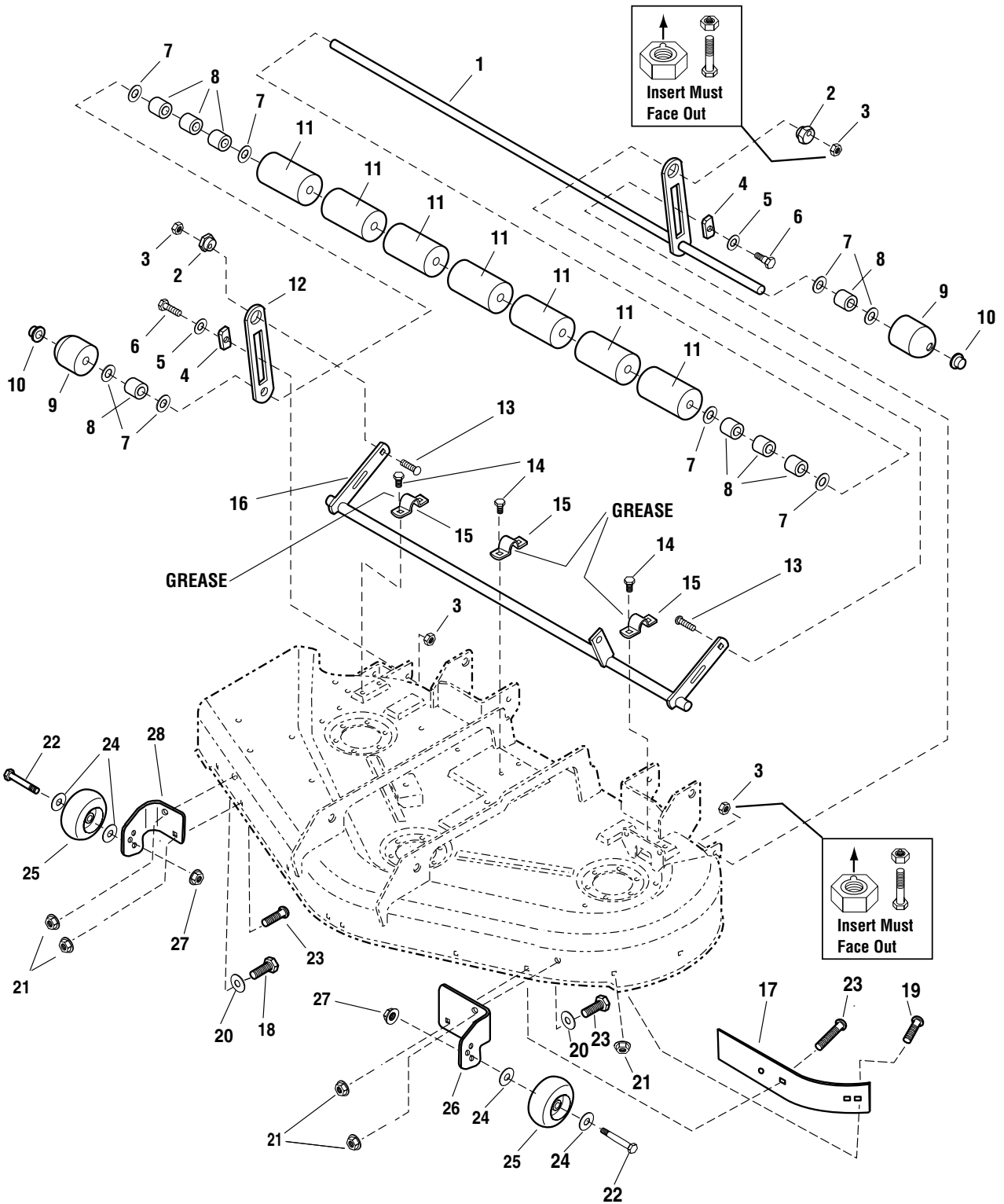
The above parts group applies to the following Mfg. Nos.:

2690449 - Champion
2690451 - Champion
2690452 - Champion
2690483 - Champion
2690484 - Champion

44" Mower Deck Roller Group

2764RL0

NOTE: Unless noted otherwise,
use the standard hardware torque
specification chart.



The above parts group applies to the following Mfg. Nos.:

2690449 - Champion

2690483 - Champion

44" Mower Deck Roller Group

REF NO	PART NO.	QTY.	DESCRIPTION
1	5048676C	1	SHAFT, ROLLER, 44"
2	1704082	2	NUT, ADJUSTER
3	7960641	4	NUT, HEX ALUMINUM INSERT LOCK, 3/8-16
4	1677507	2	SLIDE
5	1924361	2	WASHER, PLAIN, 1/2
6	2172622	2	BOLT, SHOULDER, 3/8-16
7	1924366	8	WASHER, .661 ID X 1.12 OD X .11, BLACK
8	1602946	8	SPACER, 25/64 X 13/16 X 13/16, STEEL, BLACK
9	1717675	2	ROLLER, ROUNDED
10	1960520	2	NUT, PUSH
11	1668513	7	ROLLER
12	5049040C	1	BAR, ROLLER
13	1931352	2	CARRIAGE BOLT, 3/8-16 X 1-1/2
14	1664847	6	CAPSCREW, HEX HEAD TAPTITE, 5/16-18 X 3/4
15	1665374	3	STRAP
16	5048672C	1	SHAFT, DECK LIFT, 44"
17	1724538	1	SHORT BLOWOUT BAFFLE
18	5025145X8	1	CARRIAGE BOLT, 5/16-18 X 1
19	5025145X6	1	CARRIAGE BOLT, 5/16-18 X 3/4
20	5025155	2	WASHER, 5/16, PLAIN, SAE
21	5025392	5	NUT, 5/16 - 18, HEX, NYLOCK FLANGE
22	2108765	2	BOLT, REAR WHEEL
23	5025011X8	3	CAPSCREW, HEX HEAD, 5/16-18 X 1
24	1960027	4	WASHER
25	1714760	2	GAUGE WHEEL
26	5049017C	1	BRACKET, GAUGE WHEEL, LH
27	1930645	2	NUT, FLANGE, SIDELOCK, 3/8-16
28	5049018C	1	BRACKET, GAUGE WHEEL, RH

Footnotes

The above parts group applies to the following Mfg. Nos.:

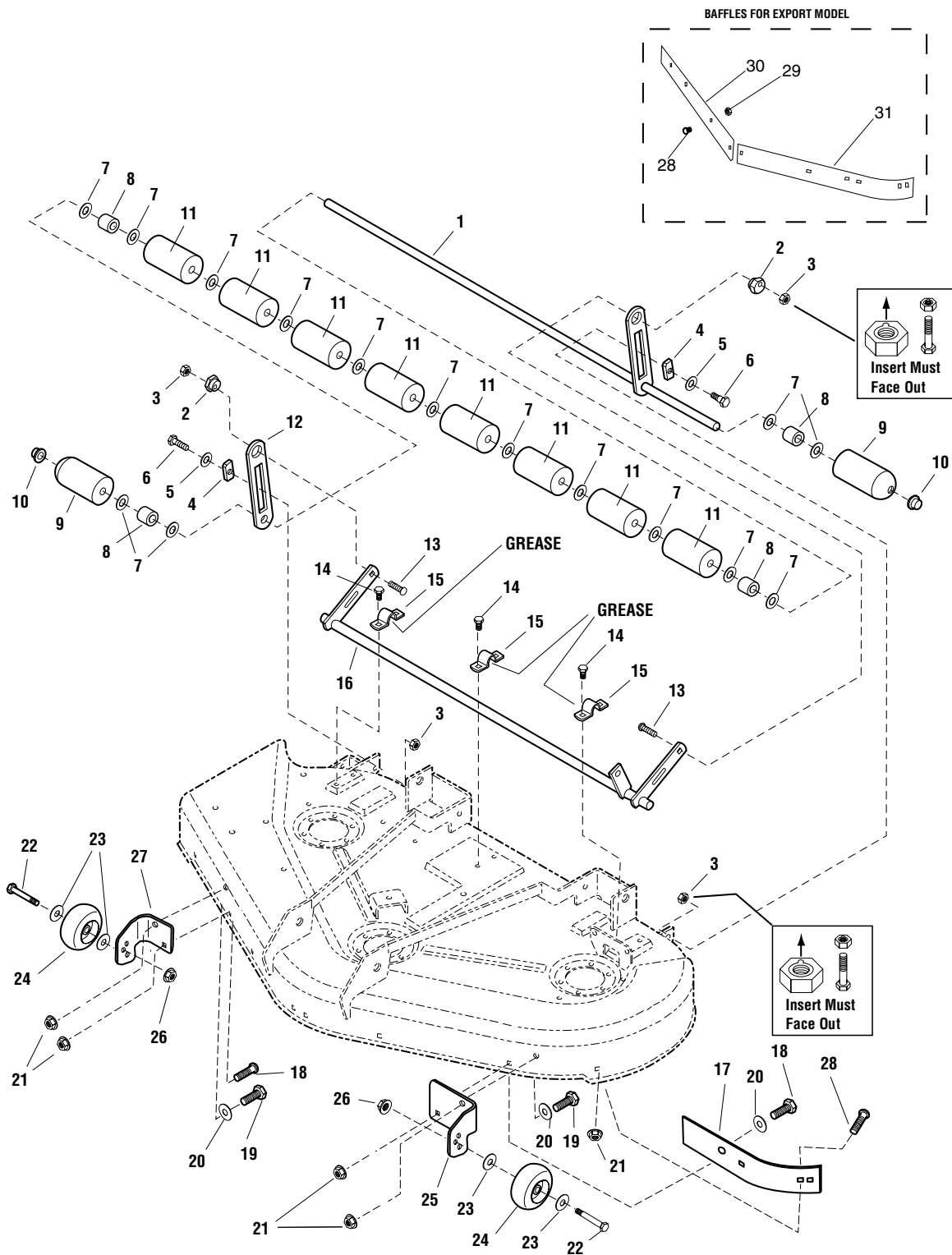
2690449 - Champion

2690483 - Champion

50" Mower Deck Roller Group

NOTE: Unless noted otherwise,
use the standard hardware torque
specification chart.

2765RL0



The above parts group applies to the following Mfg. Nos.:

- 2690451 - Champion
- 2690452 - Champion
- 2690484 - Champion

50" Mower Deck Roller Group

REF NO	PART NO.	QTY.	DESCRIPTION
1	5048746C	1	SHAFT, ROLLER, 50"
2	1704082	2	NUT, ADJUSTER
3	7960641	4	NUT, HEX ALUMINUM INSERT LOCK, 3/8-16
4	1677507	2	SLIDE
5	1924361	2	WASHER, PLAIN, 1/2
6	2172622	2	BOLT, SHOULDER, 3/8-16
7	1924366	15	WASHER, .661 ID X 1.12 OD X .11, BLACK
8	1709195	8	SPACER-0.666 ID X 0.876OD X 1.25 LG SPLIT BLK
9	1722036	2	ROLLER, ROUNDED
10	1960520	2	NUT, PUSH
11	1668513	8	ROLLER
12	5049040C	1	BAR, ROLLER
13	1931352	2	CARRIAGE BOLT, 3/8-16 X 1-1/2
14	1664847	6	CAPSCREW, HEX HEAD TAPTITE, 5/16-18 X 3/4
15	1665374	3	STRAP
16	5048674C	1	SHAFT, DECK LIFT, 50"
17	1724538	1	SHORT BLOWOUT BAFFLE
18	5025145X8	2	CARRIAGE BOLT, 5/16-18 X 1
19	5025011X8	2	CAPSCREW, HEX HEAD, 5/16-18 X 1
20	5025155	2	WASHER, 5/16, PLAIN, SAE
21	5025392	5	NUT, 5/16 - 18, HEX, NYLOCK FLANGE
22	2108765	2	BOLT, REAR WHEEL
23	1960027	4	WASHER
24	1714760	2	GUAGE, WHEEL
25	5049017C	1	BRACKET, GUAGE WHEEL, LH
26	1930645	2	NUT, FLANGE, SIDELOCK, 3/8-16
27	5049018C	1	BRACKET, GUAGE WHEEL, RH
28	5025145X6	11	CARRIAGE BOLT, 5/16-18 X 3/4
29	5025057	10	NUT, 5/16 - 18 HEX NYLON LOCK
30	1716869A	1	BLOWOUT BAFFLE, RH 50" MOWER - BLACK (Export model only.)
31	1716870A	1	BLOWOUT BAFFLE, LH 50" MOWER - BLACK (Export model only.)

Footnotes

The above parts group applies to the following Mfg. Nos.:

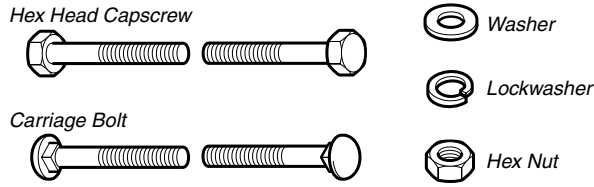
2690451 - Champion

2690452 - Champion

2690484 - Champion

Hardware Identification & Torque Specifications

Common Hardware Types

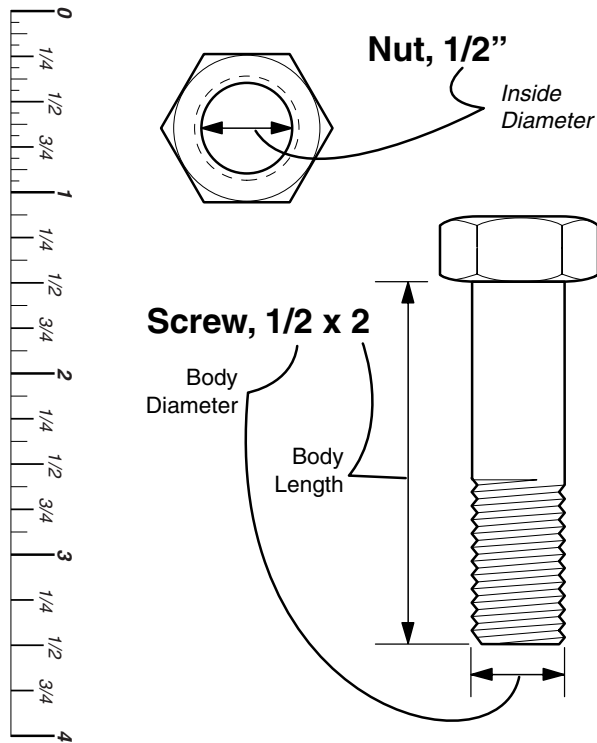


Standard Hardware Sizing

When a washer or nut is identified as 1/2", this is the *Nominal size*, meaning the *inside diameter* is 1/2 inch; if a second number is present it represents the *threads per inch*

When bolt or capscrew is identified as 1/2 - 16 x 2", this means the *Nominal size*, or *body diameter* is 1/2 inch; the second number represents the *threads per inch* (16 in this example, and the final number is the *body length* of the bolt or screw (in this example 2 inches long).

The guides and ruler furnished below are designed to help you select the appropriate hardware and tools.



Torque Specification Chart

FOR STANDARD MACHINE HARDWARE (Tolerance ± 20%)

Hardware Grade	No Marks SAE Grade 2		SAE Grade 5		SAE Grade 8	
	in/lbs ft/lbs	Nm.	in/lbs ft/lbs	Nm.	in/lbs ft/lbs	Nm.
8-32	19	2.1	30	3.4	41	4.6
8-36	20	2.3	31	3.5	43	4.9
10-24	27	3.1	43	4.9	60	6.8
10-32	31	3.5	49	5.5	68	7.7
1/4-20	66	7.6	8	10.9	12	16.3
1/4-28	76	8.6	10	13.6	14	19.0
5/16-18	11	15.0	17	23.1	25	34.0
5/16-24	12	16.3	19	25.8	27	34.0
3/8-16	20	27.2	30	40.8	45	61.2
3/8-24	23	31.3	35	47.6	50	68.0
7/16-14	30	40.8	50	68.0	70	95.2
7/16-20	35	47.6	55	74.8	80	108.8
1/2-13	50	68.0	75	102.0	110	149.6
1/2-20	55	74.8	90	122.4	120	163.2
9/16-12	65	88.4	110	149.6	150	204.0
9/16-18	75	102.0	120	163.2	170	231.2
5/8-11	90	122.4	150	204.0	220	299.2
5/8-18	100	136	180	244.8	240	326.4
3/4-10	160	217.6	260	353.6	386	525.0
3/4-16	180	244.8	300	408.0	420	571.2
7/8-9	140	190.4	400	544.0	600	816.0
7/8-14	155	210.8	440	598.4	660	897.6
1-8	220	299.2	580	788.8	900	1,244.0
1-12	240	326.4	640	870.4	1,000	1,360.0

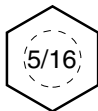
NOTES

- These torque values are to be used for all hardware excluding: locknuts, self-tapping screws, thread forming screws, sheet metal screws and socket head setscrews.
- Recommended seating torque values for locknuts:
 - for prevailing torque locknuts - use 65% of grade 5 torques.
 - for flange whizlock nuts and screws - use 135% of grade 5 torques.
- Unless otherwise noted on assembly drawings, all torque values must meet this specification.

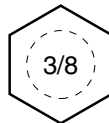
Wrench & Fastener Size Guide



1/4" Bolt or Nut
Wrench—7/16"



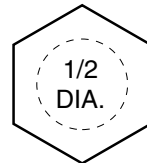
5/16" Bolt or Nut
Wrench—1/2"



3/8" Bolt or Nut
Wrench—9/16"



7/16" Bolt or Nut
Wrench (Bolt)—5/8"
Wrench (Nut)—11/16"



1/2" Bolt or Nut
Wrench—3/4"

Simplicity

MANUFACTURING, INC.
500 N. Spring Street / PO Box 997
Port Washington, WI 53074-0997 USA

www.simplicitymfg.com

© Copyright 2006 Simplicity Manufacturing, Inc.
All Rights Reserved. Printed In USA.

